



Glasbrook Avenue, TW2

£750,000

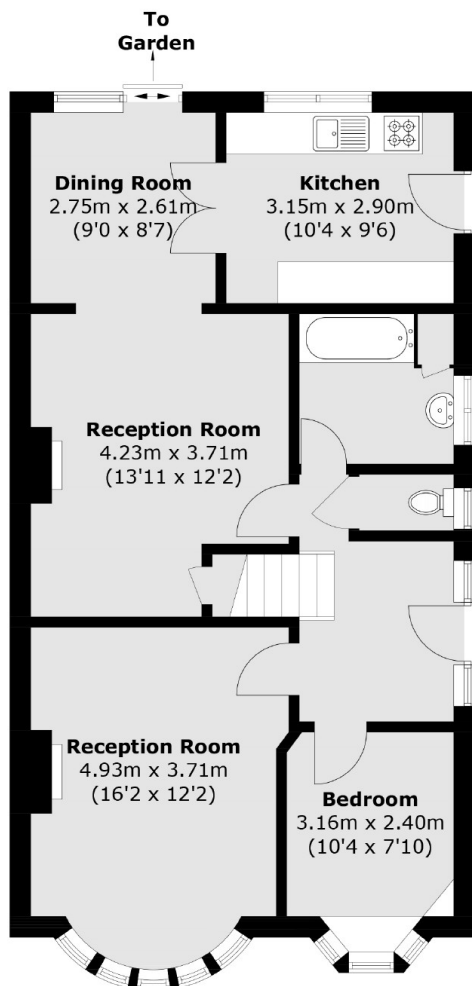
Offers Over £750,000. Offered with no onward chain is this impressive five bedroom semi detached 1930's family home that benefits from having two bath/ shower rooms, off street parking and a large private rear garden with side access.

Glasbrook Avenue is a popular residential road, close to Whitton and Twickenham town centres, which both have mainline stations with fast links to London Waterloo. There is easy access to the A316 which connects you to the M3, M4 and M25 motorways and to Richmond. Crane Park nature reserve is 100 yards away and the area is renowned for its excellent schools.

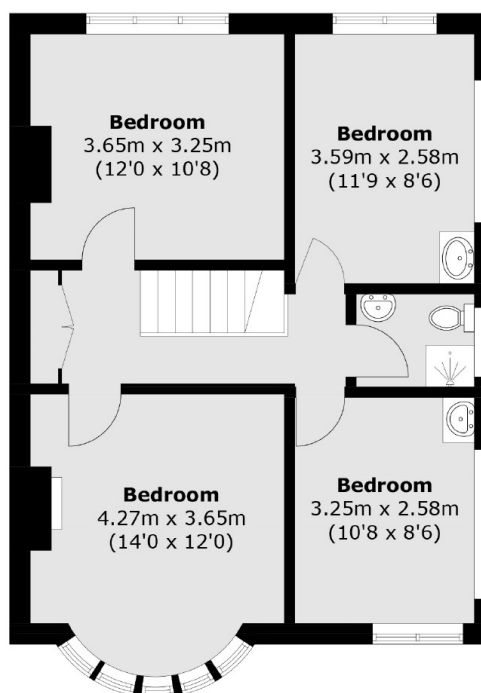
Features

- Five Bedrooms
- Two Receptions
- Two Bath/Shower Rooms
- Off Street Parking
- Side Access
- Close To Crane Park

Glasbrook Avenue, Whitton, TW2



Ground Floor



First Floor

Total area (approx.): 127.6 sq. m (1,373.5 sq. ft)