



Gilpin Crescent, TW2

£474,950

Offered with no onward chain this three bed semi-detached could make a wonderful family home. The property also benefits from a South facing garden, potential to extend and off street parking.

Gilpin Crescent is a quiet residential cul-de-sac off Nelson Road which leads to Whitton high street where you will find a vast array of shops, pubs and cafés including Starbucks. The area is also ideal for commuters as there is a fast link to London Waterloo via the mainline station and there are also a number of good schools nearby.

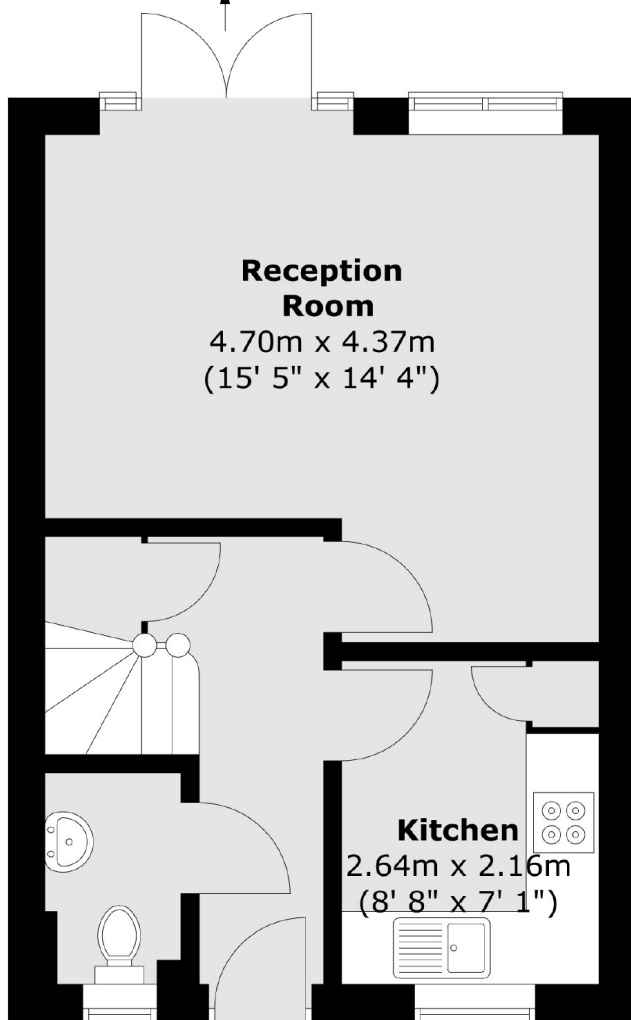
Features

- Three Bedrooms
- South Facing Garden
- Off Street Parking
- Richmond Borough
- Potential To Extend
- No Onward Chain

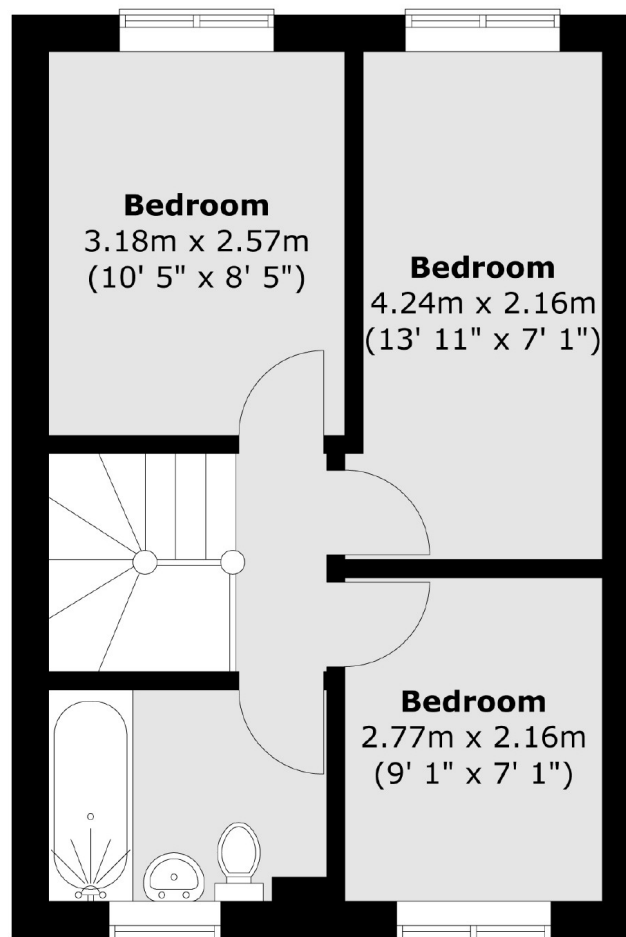
Gilpin Crescent, Whitton, TW2

Ground Floor

To
Garden



First Floor



Total area (approx.) : 67 sq. m (721 sq. ft)