



Ellerman Avenue, TW2

£749,950

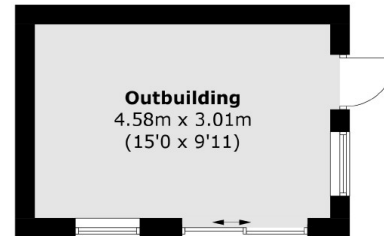
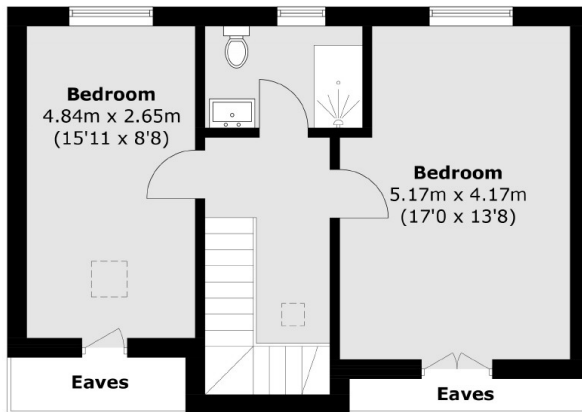
Offers Over £749,950. Offered with on onward chain this five bedroom semi detached bungalow benefits from having three bath/shower rooms, a large garden, a utility room and off street parking to the front.

Ellerman Avenue is adjacent to the River Crane and Crane Park. Both Whitton high street and Whitton mainline station are just over a mile away which offers you a fast link to London Waterloo and there are a number of good schools nearby.

Features

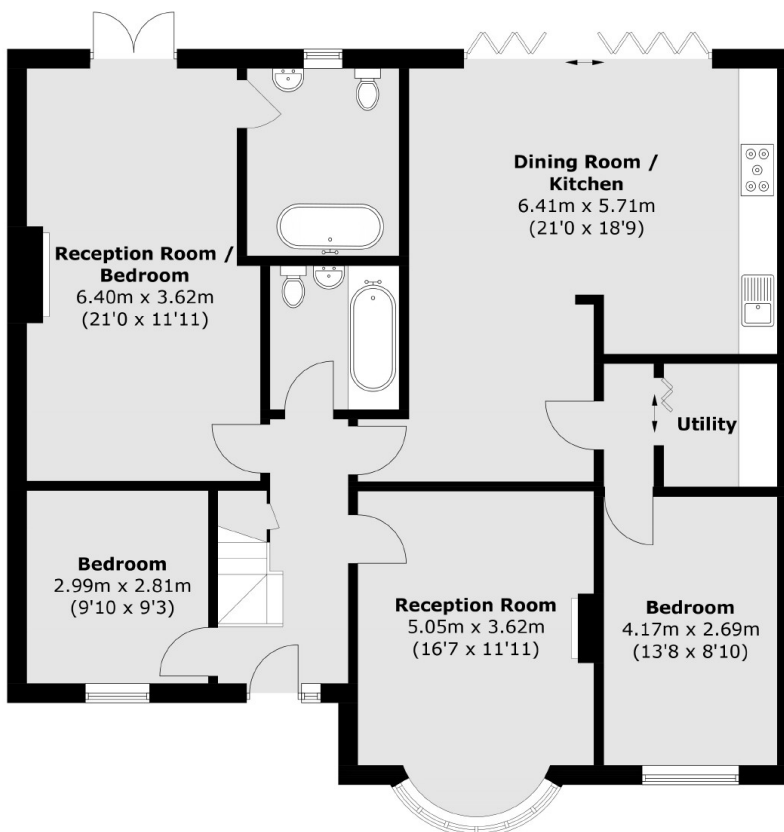
- Off Street Parking
- Five Bedrooms
- Three Bath/Shower Rooms
- Utility Room
- Large Garden
- No Onward Chain

Ellerman Avenue, Twickenham, TW2



(Not Shown In Actual
Location / Orientation)

First Floor



Ground Floor

Total area (approx.): 165.3 sq. m (1,779.2 sq. ft)
Outbuilding (approx.): 14.2 sq. m (152.8 sq. ft)
(Excluding Eaves)