

Heath Road, TW1

£1,195 Per calendar month

Located on Twickenham high street, one bedroom apartment having been newly redecorated throughout comes with a spacious open plan living room, double bedroom and a white bathroom suite.

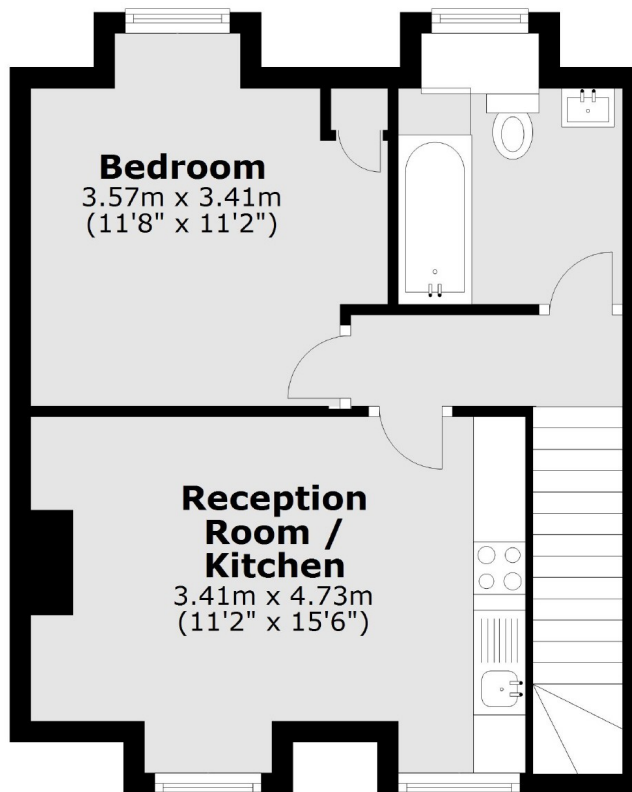
Heath Road is located in the heart of a vibrant Twickenham town centre close to Twickenham mainline station, bars, shops and restaurants. There are great transport links on the high street which will take you to local town centres.

Features

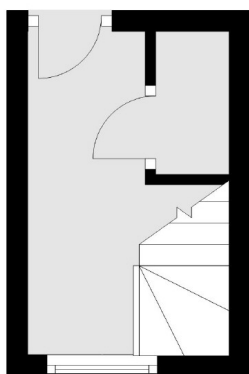
- One Double Bedroom
- Open Plan Living
- Newly Redecorated
- Gas Central Heating
- Central Location
- Close To Station

Heath Road, Twickenham, TW1

Second Floor



First Floor



Total area: approx. 43.1 sq. metres (463.7 sq. feet)