



Sherland Road, TW1

£2,100 Per calendar month

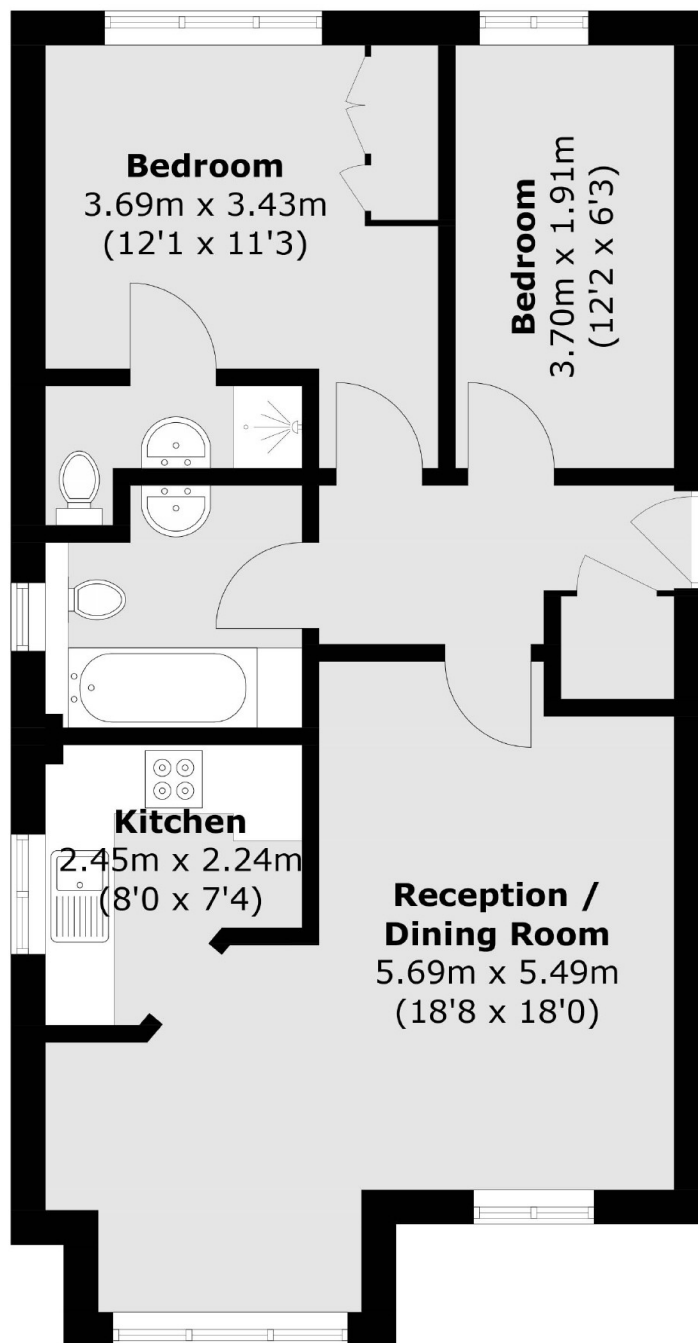
Located in the heart of Twickenham this two bedroom apartment is a perfect home for tenants that need a quick commute. With two double bedrooms, two bathrooms, a spacious living room and galley kitchen as well as the bonus of an allocated parking space.

Sherland Road is located just behind the high street where you will find a vast array of shops, pubs and restaurants as well as being close to mainline station providing a fast link to London Waterloo.

Features

- Two Bedroom Flat
- Allocated Parking Space
- Centrally Located
- Built In Storage
- Close To Transport
- Unfurnished

Sherland Road, Twickenham, TW1



Total area (approx.): 57.6 sq. m (620.0 sq. ft)