



Sherland Road, TW1

£2,995 Per calendar month

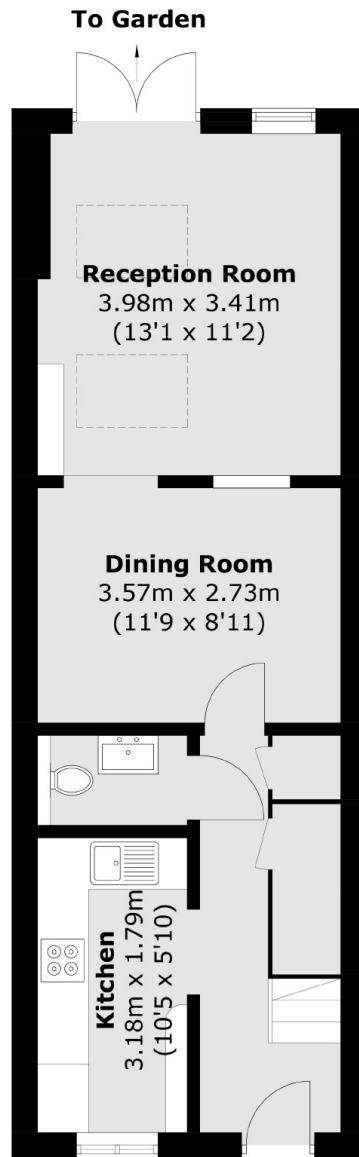
This impressive three bedroom Victorian family home is arranged over three floors and offers a through reception room with a downstairs WC, kitchen and a low maintenance patio garden.

Sherland Road is a highly desirable road, perfectly placed for all Twickenham amenities including shops, schools, restaurants and Twickenham train station with its 'fast' service into Waterloo.

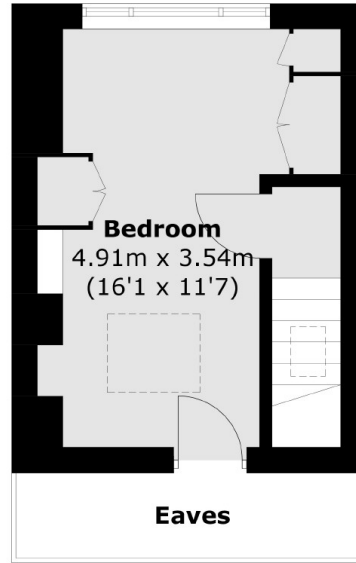
Features

- Immaculately Presented
- Central Twickenham Location
- Three Bedrooms
- Two Bathrooms
- Private Garden
- Redecorated Throughout

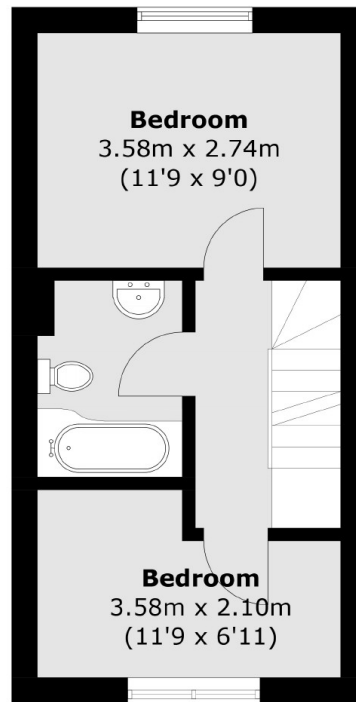
Sherland Road, Twickenham, TW1



Ground Floor



Second Floor



First Floor

Total area (approx.): 86.2 sq. m (927.9 sq. ft)
(Excluding Eaves)