



## Portugal Gardens, TW2

### £535,000

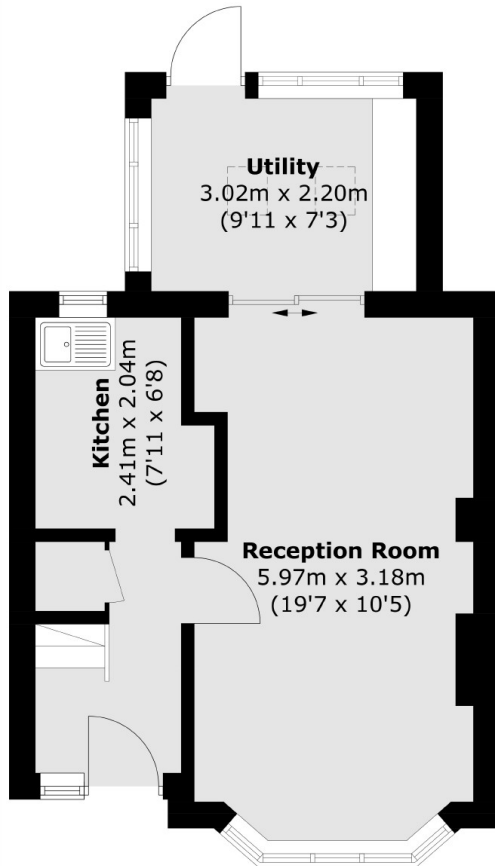
Offers In The Region Of £535,000. This attractive three bedroom semi detached home is perfect for someone wishing to put their own stamp on a property to enjoy for many years to come. Not only in a rarely available cul-de-sac, the house offers a South East Facing garden, no onward chain and garage with rear access.

Portugal Gardens is a quiet cul-de-sac off Fulwell Park Avenue which is close to an array of transport links taking you to Twickenham, Richmond and Teddington high streets. Fulwell mainline station is just under a mile and the area is renowned for its excellent schools.

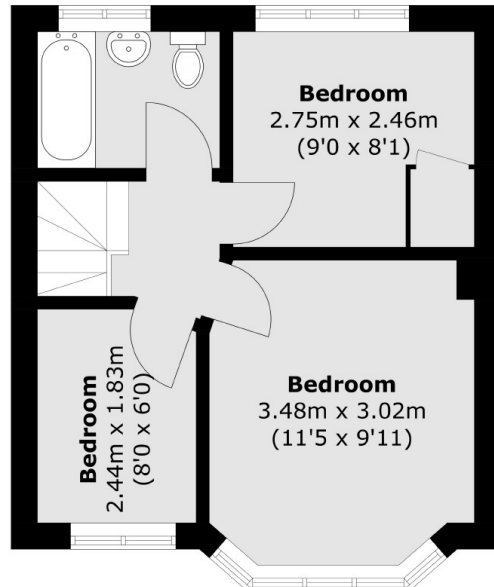
### Features

- Three Bedrooms
- Semi Detached
- South East Facing Garden
- Quiet Cul-De-Sac Location
- In Need Of Modernisation
- Garage With Rear Access

# Portugal Gardens, Twickenham, TW2



**Ground Floor**



**First Floor**

Total area (approx.): 64.7 sq. m (696.4 sq. ft)