



Woodlawn Crescent, TW2

£2,950 Per calendar month

This detached family home offers four bedrooms with surrounding gardens, a garage and off-street gated parking. This secluded house also benefits from a large garden to the front and rear of the house and has been modified to offer a fresh and contemporary finish.

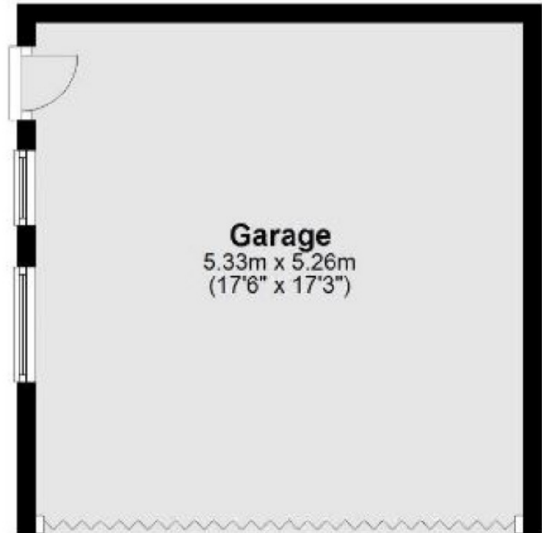
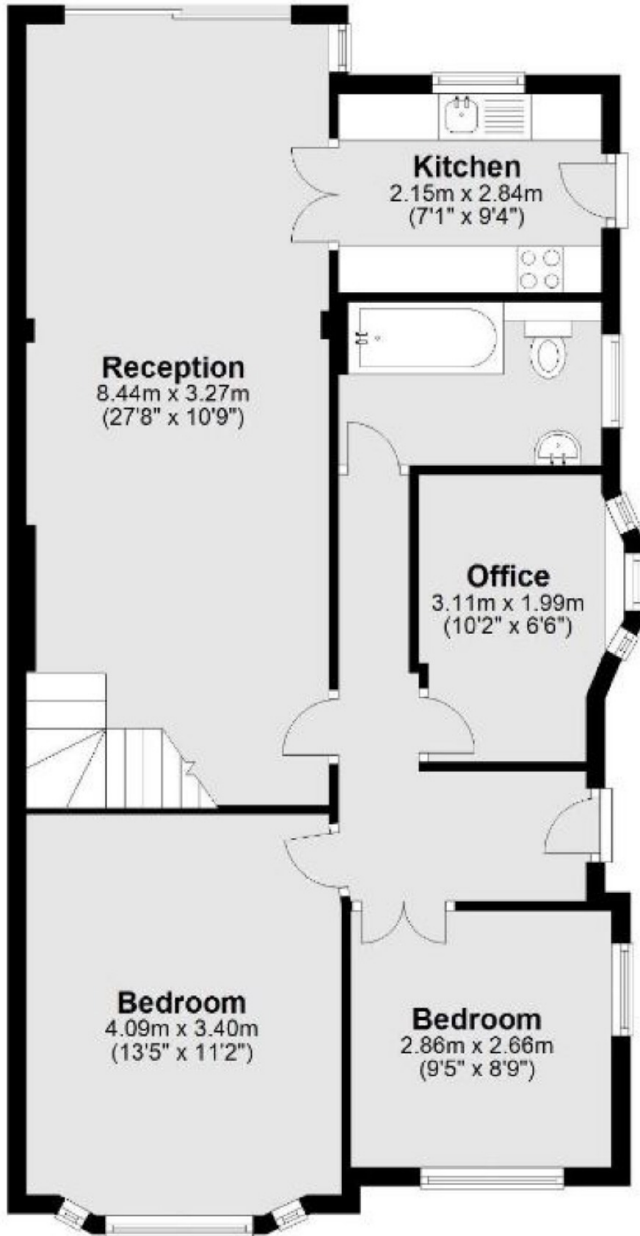
Woodlawn Crescent is a cul-de-sac road close to Crane Park with Whitton town centre and mainline station for direct trains into London Waterloo is only 0.6 miles away.

Features

- Detached Family Home
- Off Street Parking
- Large Private Garden
- Double Garage
- Ready To Move Into
- Four Bedrooms

Woodlawn Crescent, Twickenham, TW2

Ground Floor



First Floor



Main area: Approx. 88.4 sq. metres (951.8 sq. feet)
Plus garages, approx. 28.0 sq. metres (301.5 sq. feet)