



Villiers Avenue, TW2

£515,000

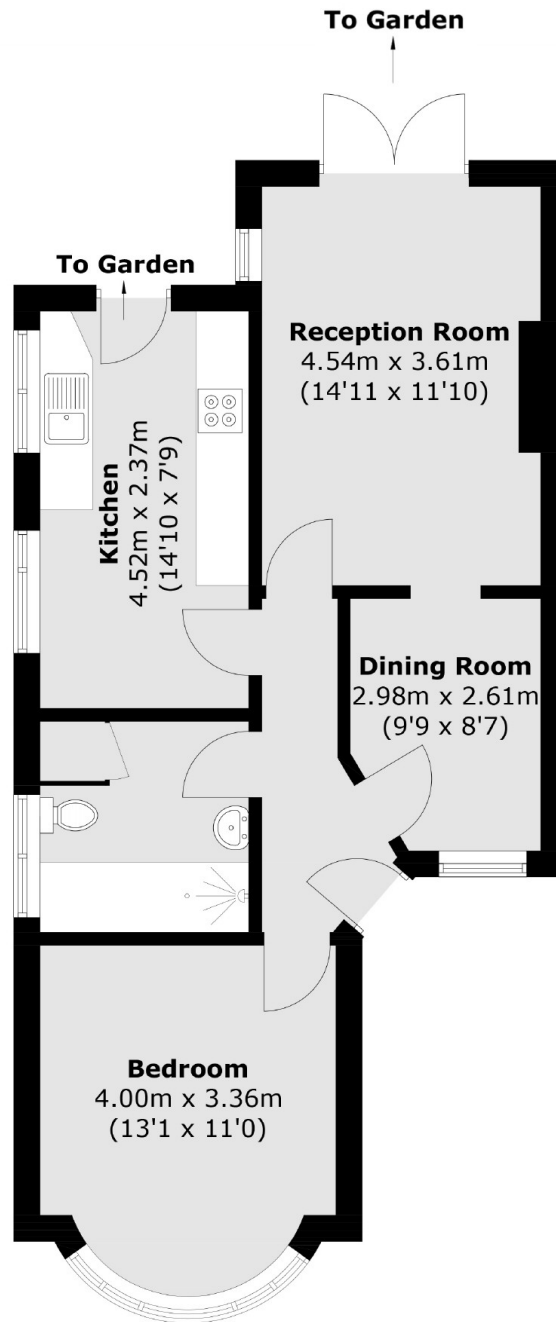
Offered with no onward chain is this spacious 1/2 bedroom semi detached 1930's bungalow which benefits from having off street parking to the front, a large private garden and potential to extend and renovate.

Villiers Avenue is adjacent to the River Crane and Crane Park. Both Whitton high street and Whitton mainline station are just over a mile away which offers you a fast link to London Waterloo and there are a number of good schools nearby.

Features

- One/Two Bedrooms
- Off Street Parking
- No Onward Chain
- Large Private Garden
- Potential To Extend & Renovate
- Popular Road

Villiers Avenue, Whitton, TW2



Total area (approx.): 56.0 sq. m (602.7 sq. ft)