



Beech Way, TW2

£3,200 Per calendar month

This beautifully presented four double bedroom family is home located on this popular residential road. The landlord has not spared any expense on the complete renovation and the finish which is to the highest standard ready for a professional couple or family to enjoy.

Beech Way is conveniently located for the David Lloyd Gym as well as having various bus routes outside taking you in and out of Twickenham town centre. The A316, M3 with access to the M25 is also around the corner..

Features

- Four Bedrooms
- Two Bathrooms
- Open Plan Layout
- Down Stairs W.C
- New Carpets
- Stunning Garden



Beech Way, TW2

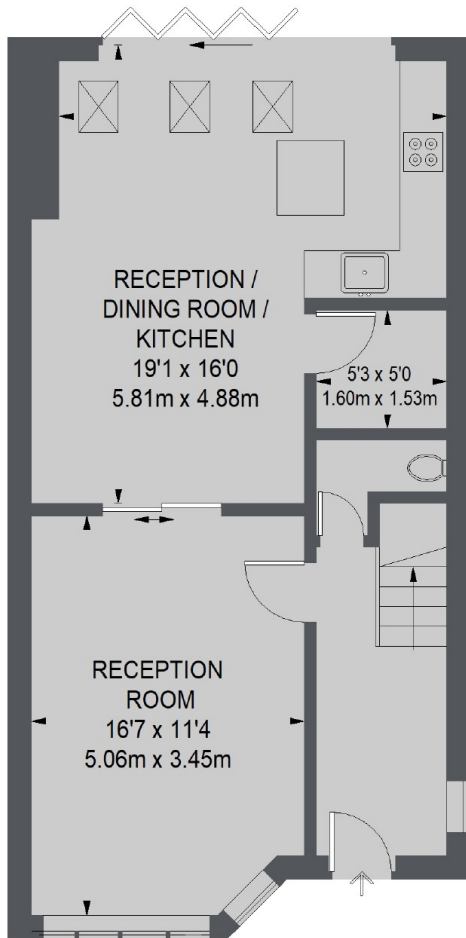
The ground floor consists of a bright and spacious double reception room leading to a large open plan modern fully fitted kitchen/dining area, private rear garden, downstairs w/c and ample storage space. There are bi-folding doors to open the space up on those sunny days.

To the first floor there are three bedrooms and modern family bathroom. The top floor has a double bedroom and ensuite shower room.

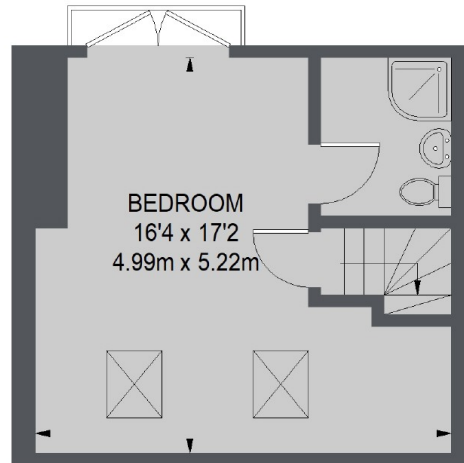
The property benefits from neutral clean decor throughout, great storage and newly designed driveway.



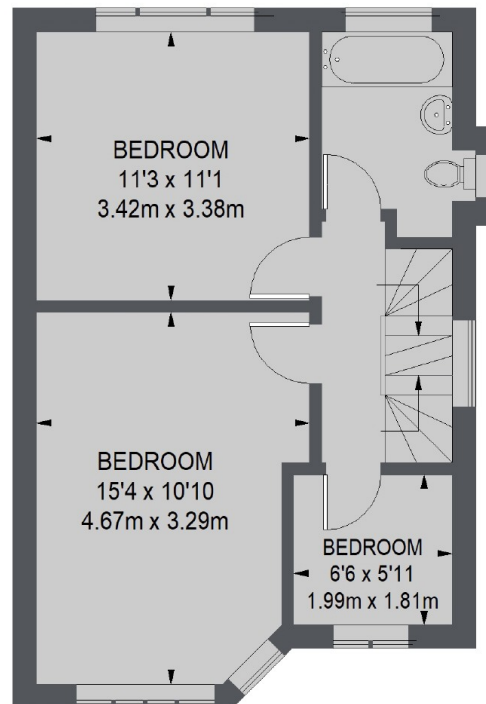
Beech Way, Twickenham, TW2



GROUND FLOOR



SECOND FLOOR



FIRST FLOOR

TOTAL APPROX. FLOOR AREA 1314 SQ. FT. (122.03 SQ. M.)