



Popes Avenue, TW2

£1,345,000

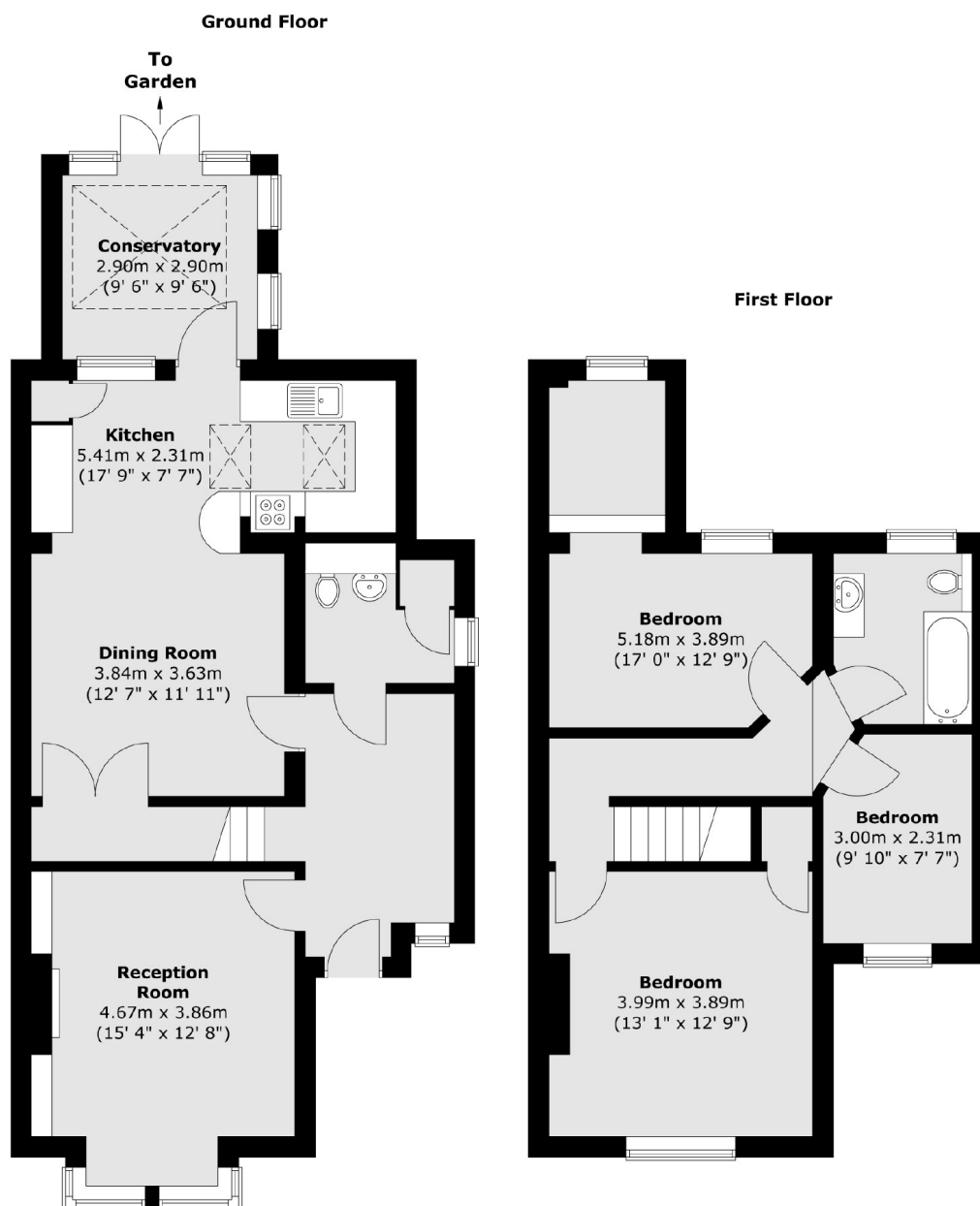
This stunning three double bedroom semi detached Victorian villa is located in the heart of Strawberry Hill and has been renovated to an excellent standard throughout. The property also benefits from having a downstairs W,C, side access as well as stylishly landscaped front and back gardens.

Popes Avenue is a beautiful tree-lined road next to Strawberry Hill village where you will find a handful of local shops, the golf course and also the mainline station which has a direct link to London Waterloo. Teddington high street is just a few minutes away and the area is also renowned for it's excellent choice of schools.

Features

- Three Double Bedrooms
- Popular Location
- Downstairs W.C
- Side Access
- Original Features
- Renovated To An Excellent Standard

Popes Avenue, Strawberry Hill, TW2



Total area (approx.) : 124 sq. m (1335 sq. ft)