



Grosvenor Road, TW1

£2,200 Per calendar month

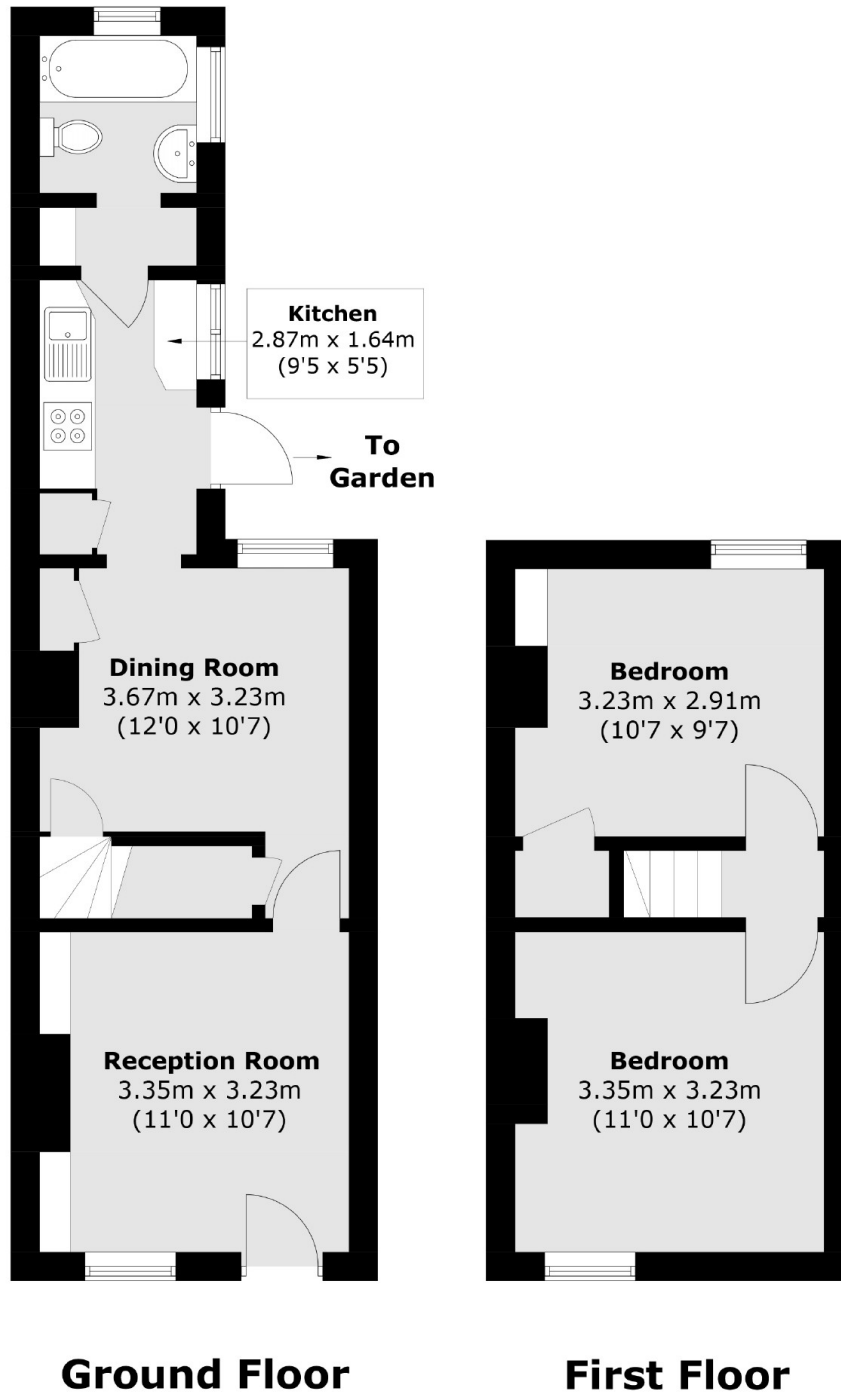
This attractive two bedroom cottage located in central Twickenham offers two reception rooms, modern gallery kitchen, a private garden and on-street parking.

Grosvenor Road is a quiet road tucked away behind Twickenham high street. Twickenham mainline station with its fast links to London Waterloo.

Features

- Two Double Bedrooms
- Private Garden
- Galley Kitchen
- Central Location
- On-Street Parking
- Two Reception Rooms

Grosvenor Road, Twickenham, TW1



Total area (approx.): 55.6 sq. m (598.4 sq. ft)