



Manor Road, TW2

£339,950

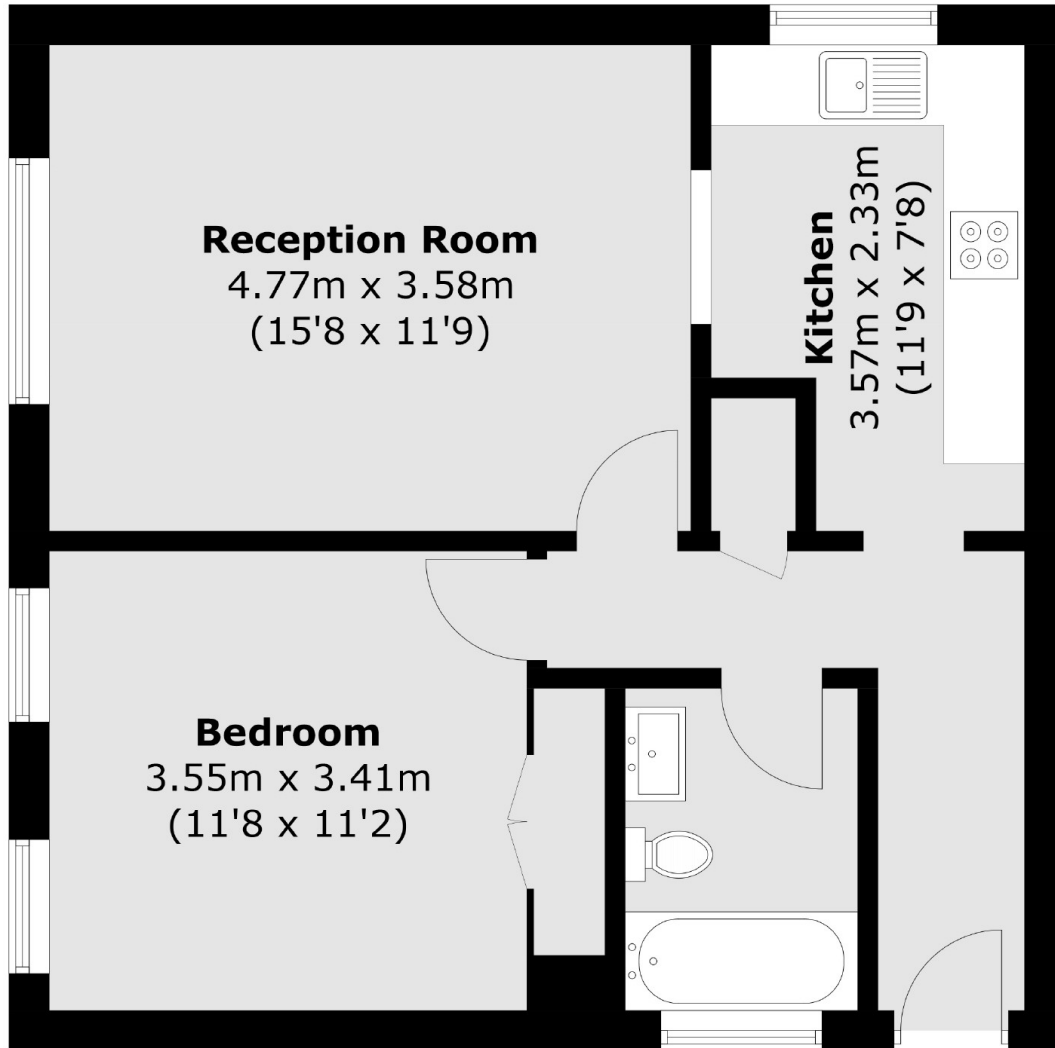
This impressive one double bedroom first floor apartment is situated down a popular road and would be a perfect first time purchase or investment. The property benefits from having residents parking, access to communal gardens and a long lease of 166 years.

Selby Court is on Manor Road which is close to excellent schools such as Waldegrave Girls and Trafalgar. Twickenham Green and the high street is also less than a mile away which offers a wide variety of shops, pubs and restaurants.

Features

- One Double Bedroom
- Excellent Condition
- Residents Parking
- Communal Gardens
- Popular Road
- Long Lease Of 166 Years

Manor Road, Twickenham, TW2



Total area (approx.): 52.2 sq. m (561.9 sq. ft)