



Meadway, TW2

£499,950

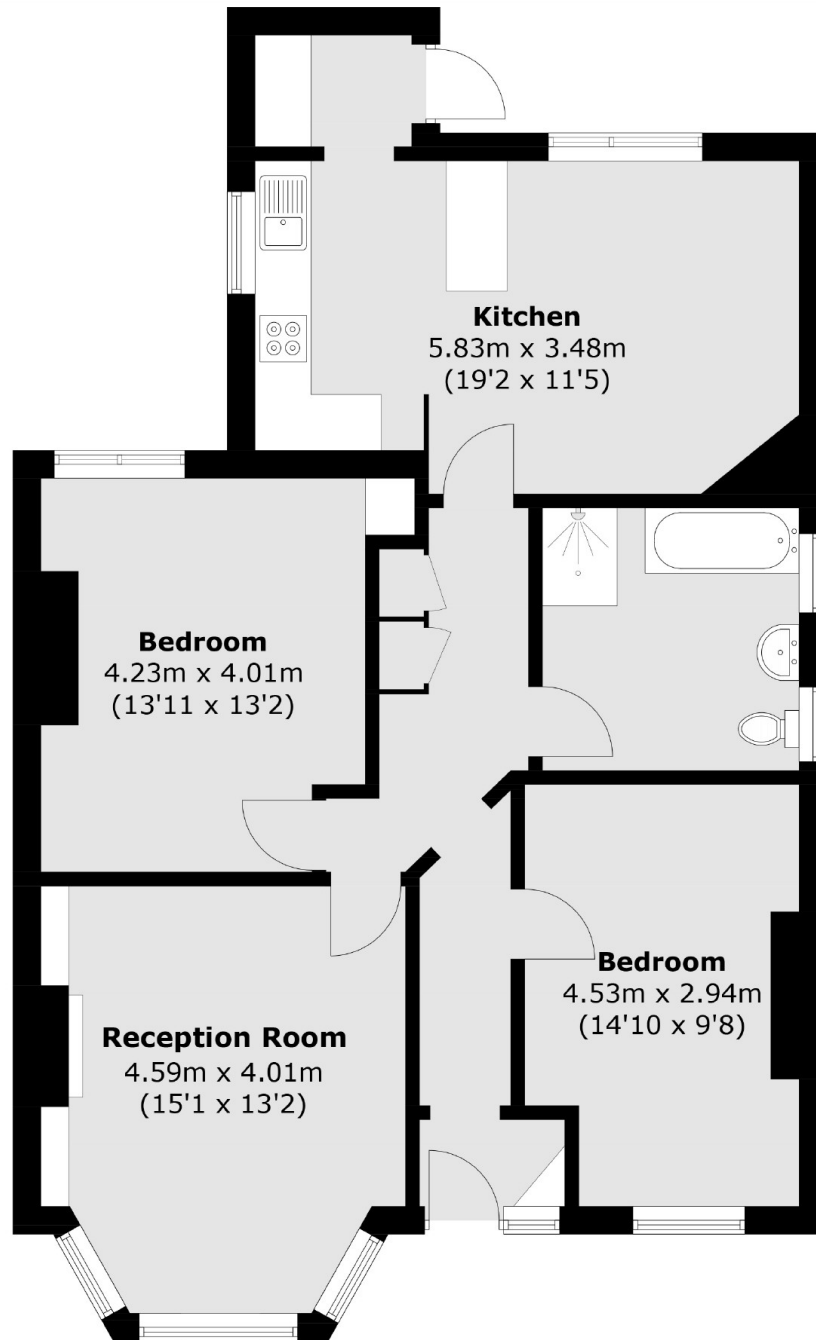
With enviable views overlooking Kneller Gardens park is this impressive two double bedroom first floor maisonette that offers almost 1000sq feet of space and also benefits from having a share of the freehold and external bike storage.

Meadway is a fantastic residential street in a popular area of Twickenham. The property is close to Kneller Gardens Park, the River Thames and Whitton mainline station with its fast trains into London Waterloo. There are excellent state and private schools nearby (eg. Waldegrave Girls, Archdeacon, St. James and The Mall), two royal parks and many pleasant, green open spaces.

Features

- Two Double Bedrooms
- Excellent Condition
- Almost 1000sq Feet In Size
- Share Of Freehold
- Overlooking Kneller Gardens Park
- Own Entrance Off A Private Balcony

Meadway, Twickenham, TW2



Total area (approx.): 89.0 sq. m (958.0 sq. ft)