



Nelson Road, TW2

£849,950

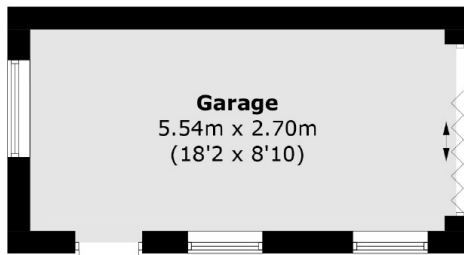
This fantastic four bedroom semi-detached house is an ideal family home as it benefits from having off-street parking to the front for three cars, a private rear garden with side access and a detached garage.

Nelson Road is situated off Whitton high street where you will find a vast array of shops, pubs and cafés including Starbucks. There is a fast link to London Waterloo and there are also a number of good schools nearby such as Turing House and the soon to be built Radnor House at Kneller Hall.

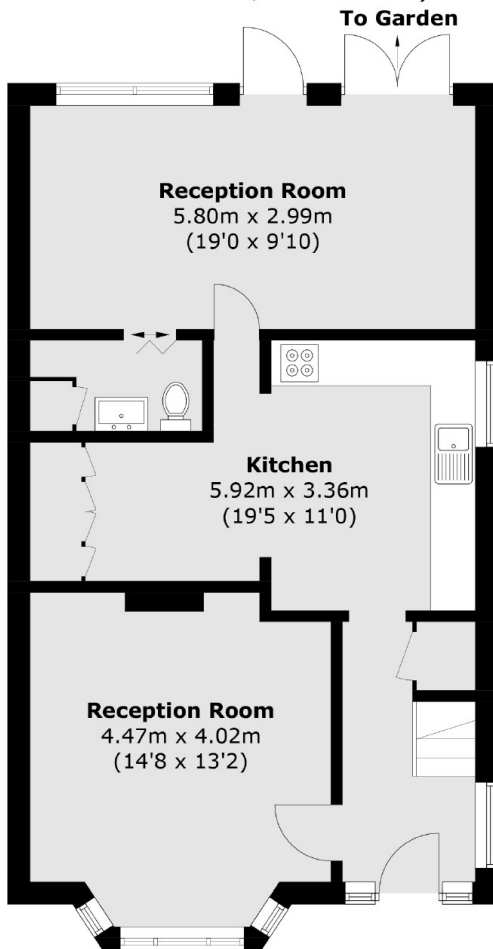
Features

- Four Bedrooms
- Two Bathrooms
- Off-Street Parking
- Detached Garage
- Side Access
- Central Location

Nelson Road, Whitton, TW2

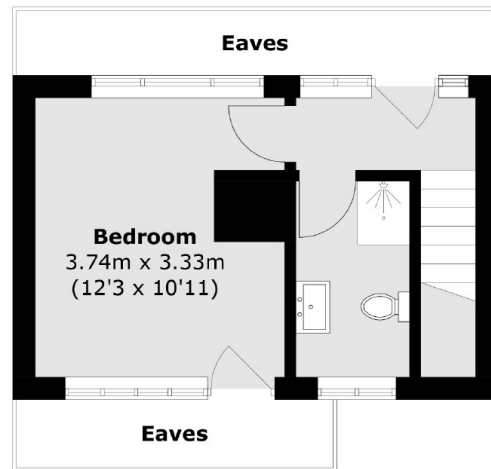


(Not Shown In Actual
Location / Orientation)

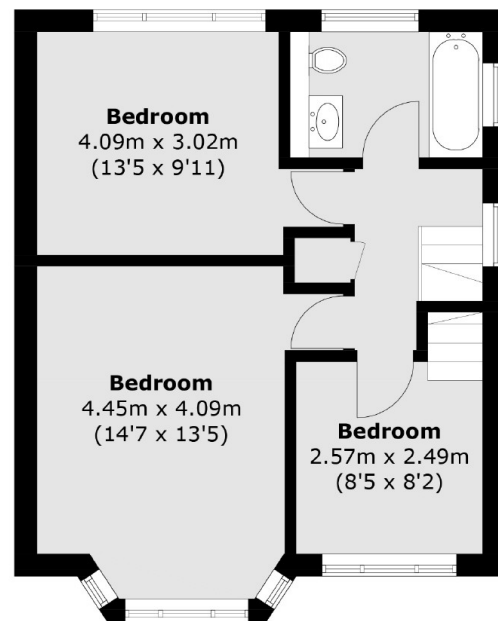


Ground Floor

Total area (approx.): 128.7 sq. m (1385.3 sq. ft)
Garage area (approx.): 15.4 sq. m (165.8 sq. ft)
(Excluding Eaves)



Second Floor



First Floor