



Cobbett Road, TW2

£2,000 Per calendar month

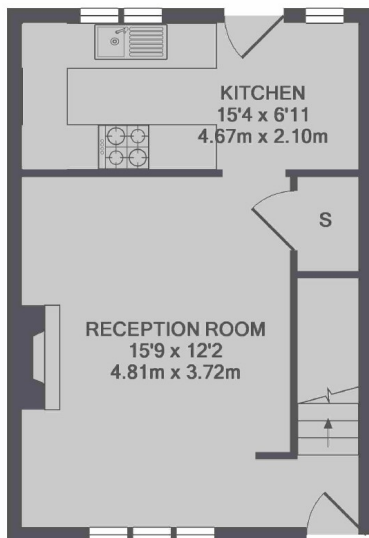
This well presented two/three bedroom semi-detached house is located on a popular road and has a large living room, a modern kitchen/diner and driveway parking for two cars.

Cobbett Road is situated close to Whitton high street which offers a vast array of local shops as well as a fantastic mainline station with its fast trains to London Waterloo.

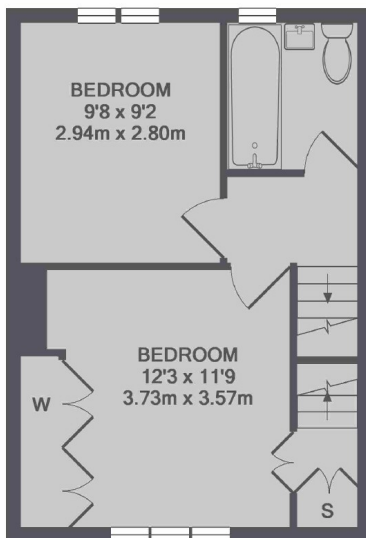
Features

Semi-Detached House
Two Double Bedrooms
Spacious Lounge
Modern Kitchen
Driveway For Two Cars
Popular Location

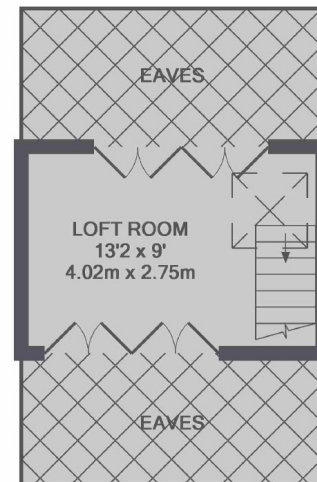
Cobbett Road, Twickenham, TW2



GROUND FLOOR



1ST FLOOR



2ND FLOOR

TOTAL APPROX. FLOOR AREA 810 SQ.FT. (75.2 SQ.M.)