



## Chertsey Road, TW2

£1,700 Per calendar month

This wonderful first floor two double bedroom apartment has a lot to offer with a bright and spacious reception room, a separate fitted kitchen and a private garden.

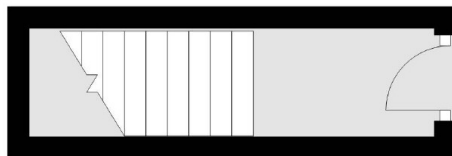
Chertsey Road is within close proximity to Whitton mainline train station with its fast links into Waterloo and is conveniently located just under half a mile from Twickenham town centre with its vast array of shops, bars and restaurants.

### Features

- Two Double Bedrooms
- Close To Whitton Station
- Private Garden
- Built-In Wardrobes

# Chertsey Road, Twickenham, TW2

## Ground Floor



## First Floor

