



## Bonser Road, TW1

£1,425,000

This beautiful five bedroom Victorian house has everything a family could want as it benefits from having two bath shower rooms, a downstairs W.C, a utility room and a sunny South facing rear garden.

Bonser Road is one of Strawberry Hills prime river roads situated off Cross Deep, just a quarter of a mile from Twickenham and Teddington town centres where there is a vast array of shops, restaurants and bars. The mainline station with links to Waterloo is also nearby.

### Features

- Five Bedrooms
- Two Bath/Shower Rooms
- Downstairs W.C
- Utility Room
- Garden Room/Outbuilding
- Excellent Condition



## Bonser Road, TW1

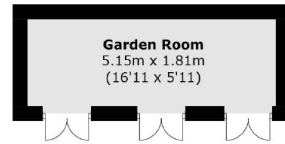
Tastefully extended and refurbished this wonderful home occupies almost 2000sq feet of impressive living accommodation and is arranged over three floors. On the ground floor there is a pretty bay fronted reception which leads through to an open plan kitchen/ family room with underfloor heating, a utility room, a downstairs W.C and access to the garden.

On the first floor there are three double bedrooms and a three piece family bathroom and on the top floor there are two further bedrooms and a four piece shower room with under floor heating.

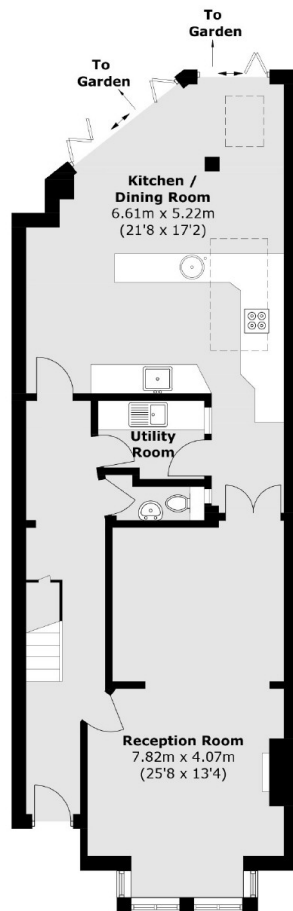
Additional benefits include a sunny South facing rear garden complete with a garden room at the end and a few fruit trees such as fig, pear and apple as well as having rear access if required.



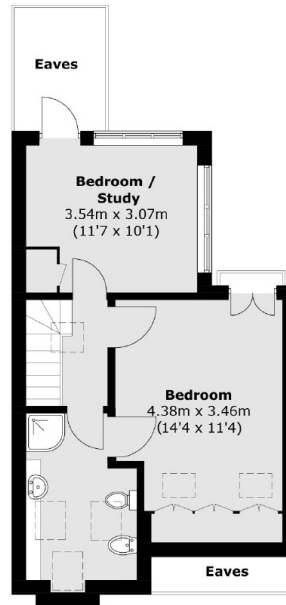
# Bonser Road, Strawberry Hill, TW1



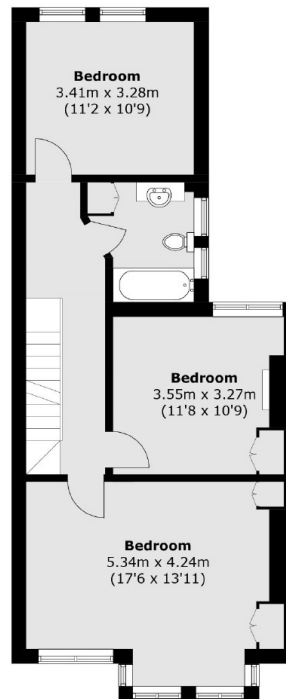
(Not Shown In Actual  
Location / Orientation)



**Ground Floor**



**Second Floor**



**First Floor**

Total area (approx.): 182.1 sq. m (1960.0 sq. ft)  
Outbuilding : 9.8 sq. m (105.4 sq. ft)  
(Excluding Eaves)