



Park Crescent, TW2

£725,000

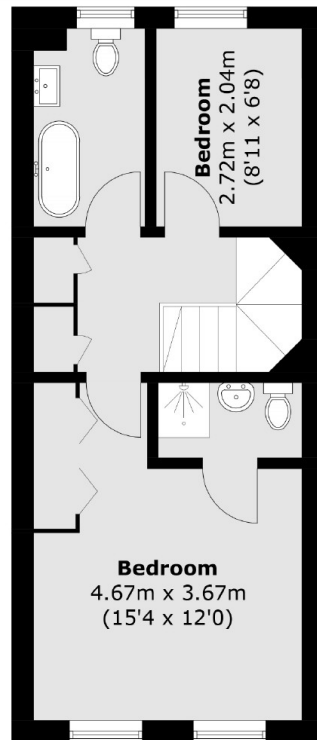
This fantastic three/four bedroom townhouse is the perfect family home as it benefits from having a recently fitted modern kitchen, a downstairs W.C, off street parking and a beautifully landscaped rear garden.

This property is tucked away in the popular Park Crescent development. Twickenham high street is less than a mile away where you will find a vast array of shops, pubs and restaurants. There are number of excellent schools nearby including Waldegrave Girls and there is easy access to Whitton station which provides a fast link to London Waterloo.

Features

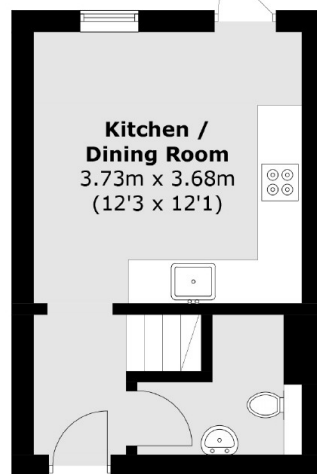
- Three/Four Bedrooms
- Popular Location
- Downstairs W.C
- Excellent Condition
- Car Port
- Recently Fitted Modern Kitchen

Park Crescent, Twickenham, TW2

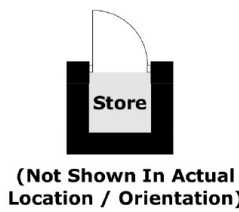


Second Floor

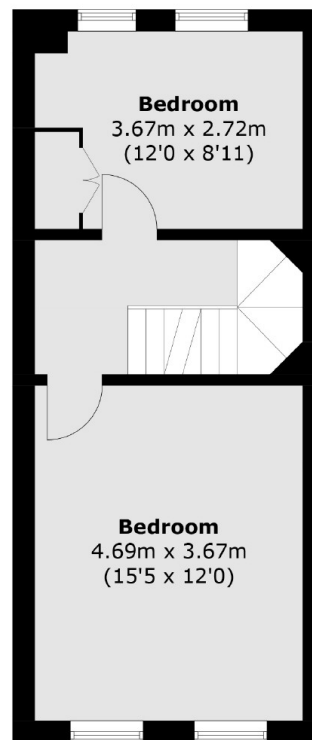
To Garden



Ground Floor



(Not Shown In Actual
Location / Orientation)



First Floor

Total area (approx.): 91.5 sq. m (984.9 sq. ft)
Store (approx.): 0.7 sq. m (7.5 sq. ft)