



## Knights Place, TW2

£2,100 Per calendar month

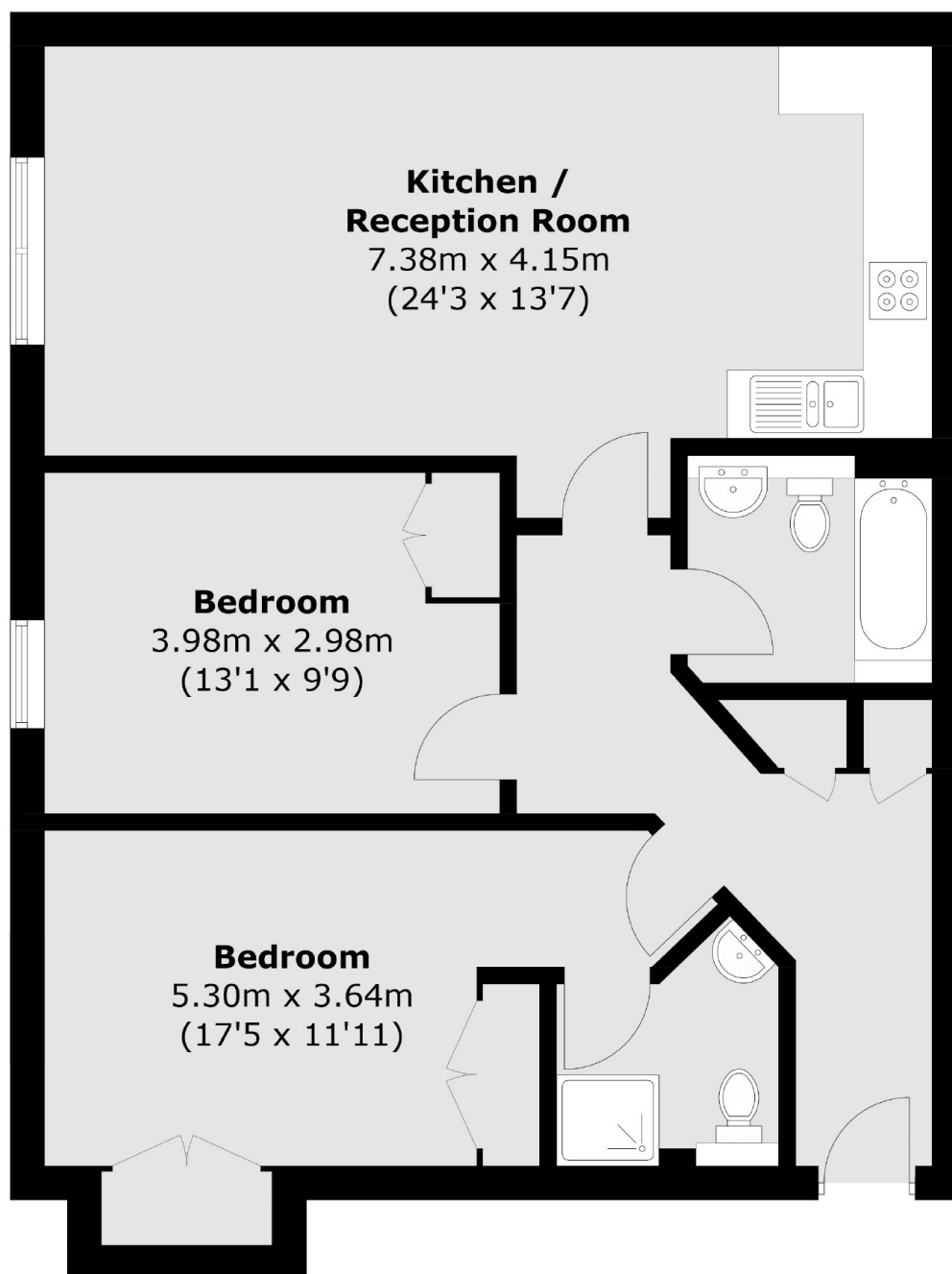
This rarely available two bedroom, two bathroom apartment is presented in excellent condition and is located close to the Twickenham town centre and Twickenham Green.

Knights Place is located close to Twickenham Green and is walking distance to Twickenham town centre with its bars and shops and mainline station.

### Features

- Two Double Bedrooms
- Private Allocated Parking
- Rarely Available
- En Suite Shower To Master
- Excess Storage
- Entry Phone System

# Knights Place, Twickenham, TW2



## First Floor

Total area (approx.): 78.0 sq. m (839.6 sq. ft)