



## Heathfield North, TW2

£3,250 Per calendar month

This stylish three bedroom period home is arguably one of the finest houses on the market. Not only can you make those tasty winter dinners within this stylish kitchen, but you can also unwind in the tastefully designed garden that leads onto a lovely studio room.

Heathfield North calling all commuters, set your alarm half an hour later living down this convenient road just a few hundred yards from Twickenham station.

### Features

- Three Bedrooms
- Stylish Kitchen
- Residential Road
- Outside Studio Room
- Close To Local Amenities
- Utility Room



## Heathfield North, TW2

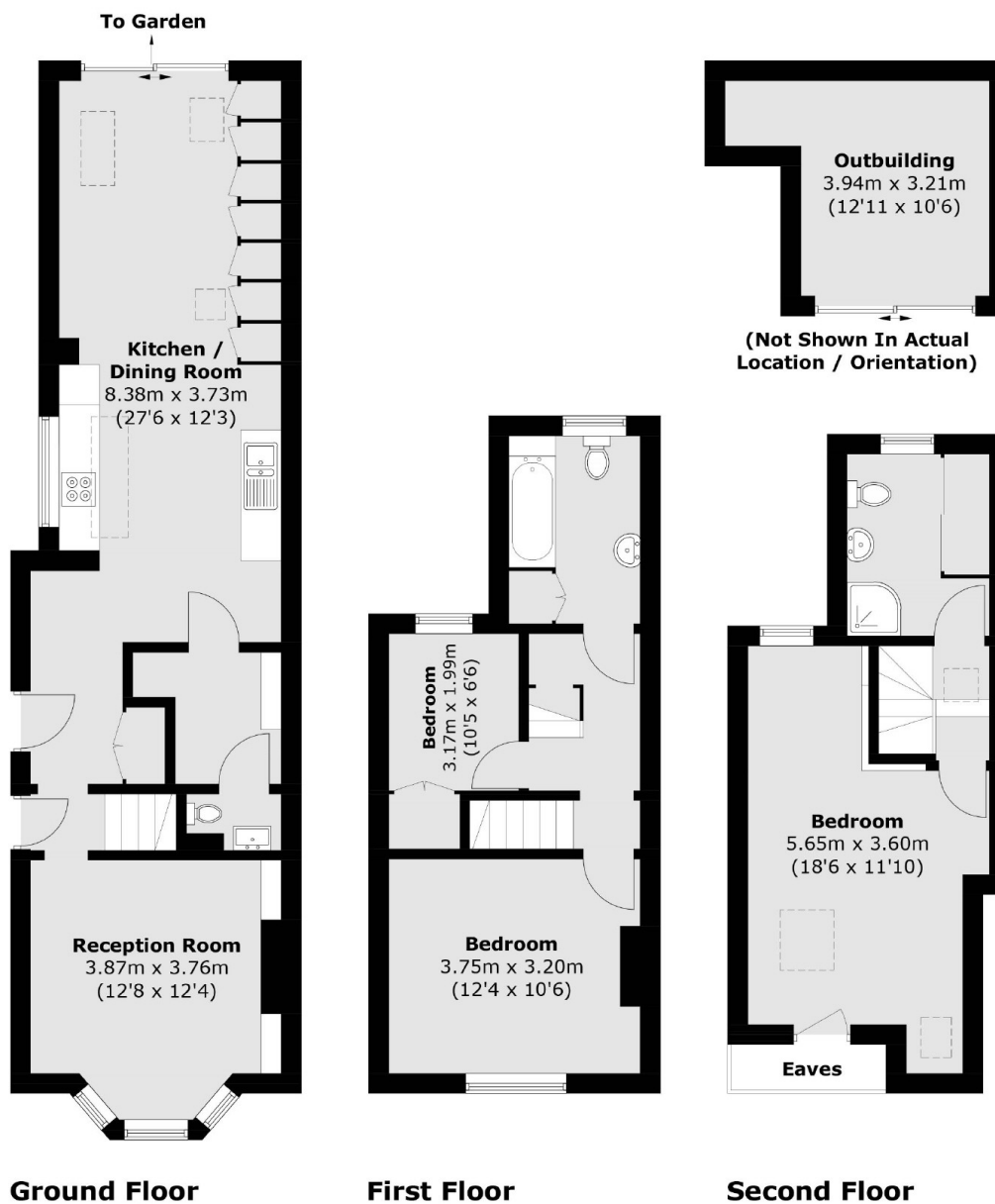
This beautiful three bedroom house is spaciouly arranged over three floors and benefits from a beautiful garden with separate studio house.

The property comprising of a reception room with bay window, open-plan kitchen/ dining room with access onto the garden, three bright bedrooms, two modern bathrooms, utility room, guest cloakroom and fantastic garden with studio room.





# Heathfield North, Twickenham, TW2



Total area (approx.): 110.5 sq. m (1,189.4 sq. ft)

Outbuilding (approx.): 10.5 sq. m (113.0 sq. ft)  
(Excluding Eaves)