



## Powder Mill Lane, TW2

£699,950

With views overlooking the Heathfield recreational park is this large four bedroom semi detached bungalow that has been recently renovated by the current owners. Benefits include a large loft room which can be used as an occasional bedroom, off street parking to the front and a South West facing garden.

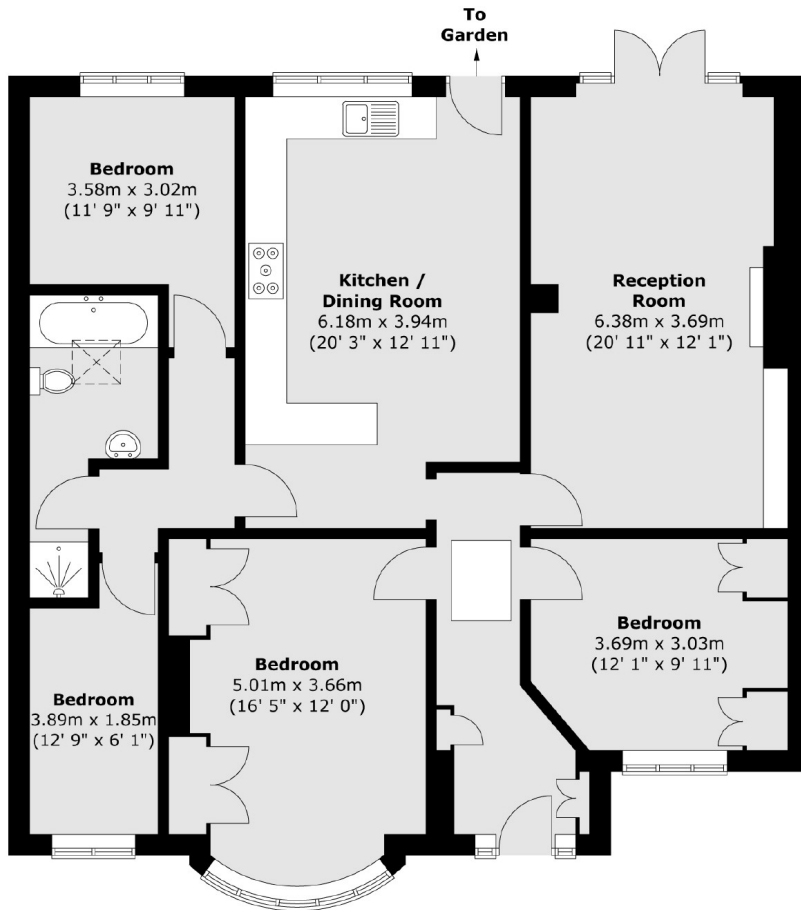
Powder Mill Lane is located close to Crane Park nature reserve and leads to Whitton town centre where you will find a vast array of shops, café's and restaurants. There are also excellent bus routes in and out of Hounslow, Whitton and Twickenham as well as a fast link train to Waterloo from Whitton mainline station.

### Features

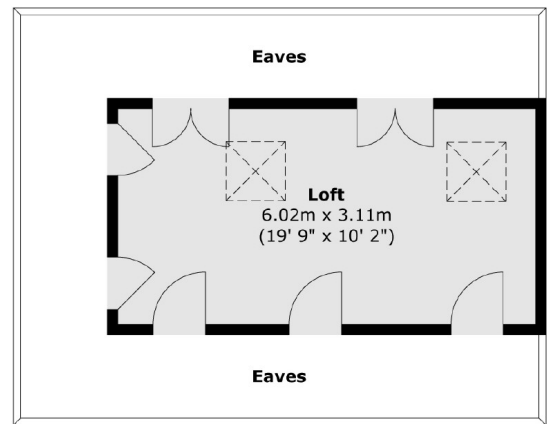
- Four Bedrooms
- Large Loft Room
- Off Street Parking For Two Cars
- Potential To Extend If Required
- South West Facing Garden
- Four Piece Bathroom

# Powder Mill Lane, Whitton, TW2

## Ground Floor



## First Floor



Total area (approx.) : 113.7 sq. m (1224 sq. ft)  
Total loft area (approx.) : 18.6 sq. m (200 sq. ft)