



Water Lane, TW1

£2,295 Per calendar month

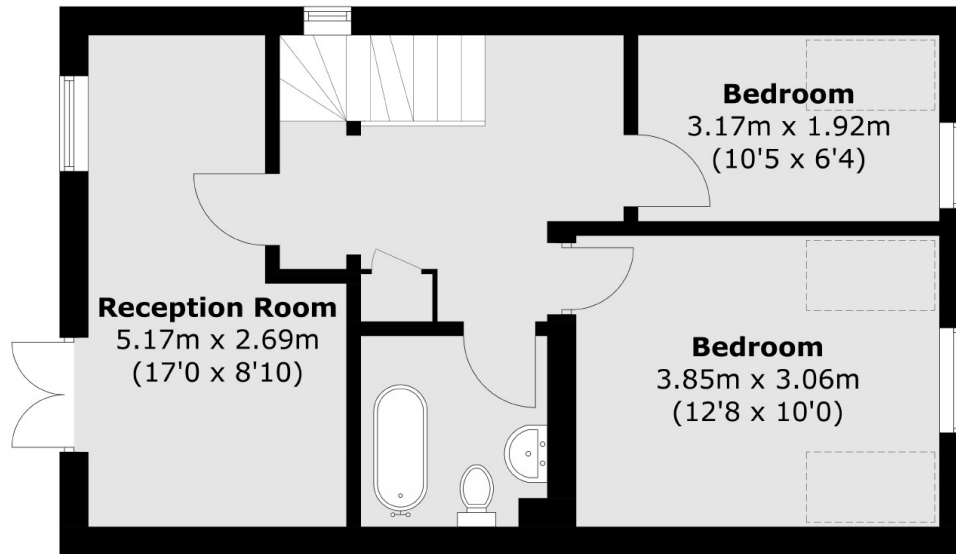
A two bedroom split-level flat located moments from Twickenham high street and the River Thames. The property has two bathrooms, a separate reception room and an open plan kitchen with space for dining.

Water Lane is close to the River Thames, Twickenham mainline station with its fast links into London Waterloo and the popular Church Street with its selection of cafe's, restaurants and pubs.

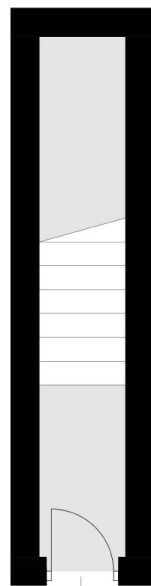
Features

- Two Bedrooms
- Split-Level
- Close to the River Thames
- Two Reception Rooms
- Two Bathrooms
- Unfurnished

Water Lane, Twickenham, TW1

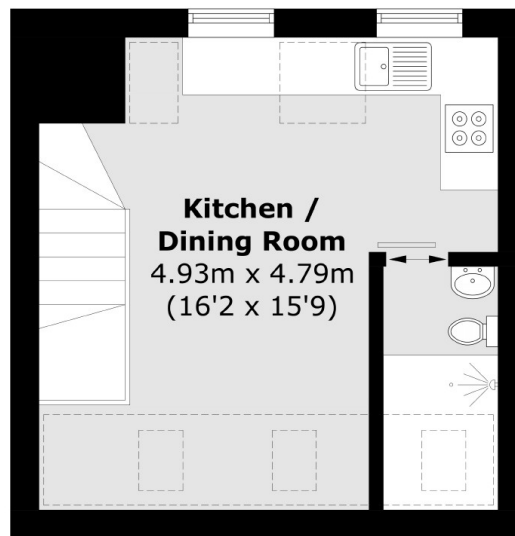


First Floor



To Front Garden

Ground Floor



Second Floor

Total area (approx.): 74.8 sq. m (805.1 sq. ft)