



## Candler Mews, TW1

£1,700,000

Situated in an exclusive gated development is this stunning five bedroom, four bathroom modern family home. The property benefits from having off street parking to the front, an integral garage and a stylish rear garden.

Candler Mews is a highly sought after modern development which is situated close to Twickenham high street and mainline station with its fast links to Waterloo. The picturesque St Margaret's village is also a few hundred yards away as well as the River Thames and Marble Hill Park.

### Features

- Gated Development
- Five Bedrooms
- Four Bathrooms
- Garage
- Off Street Parking
- Over 2100sq Feet





## Candler Mews, TW1

Occupying over 2100sq feet of impressive accommodation and arranged over four floors there is an eye catching open plan kitchen/ family room on the ground floor, ideal for entertaining and it has bi-fold doors onto the garden.

On the first floor there is a large reception room, a double bedroom and a three-piece shower room. To the second floor there are three further bedrooms, one of which has an en suite shower room and there is also an additional three-piece bathroom accessed off the hallway. The top floor has been sympathetically converted to provide a fifth bedroom complete with a modern en suite shower room and generous eaves storage space.

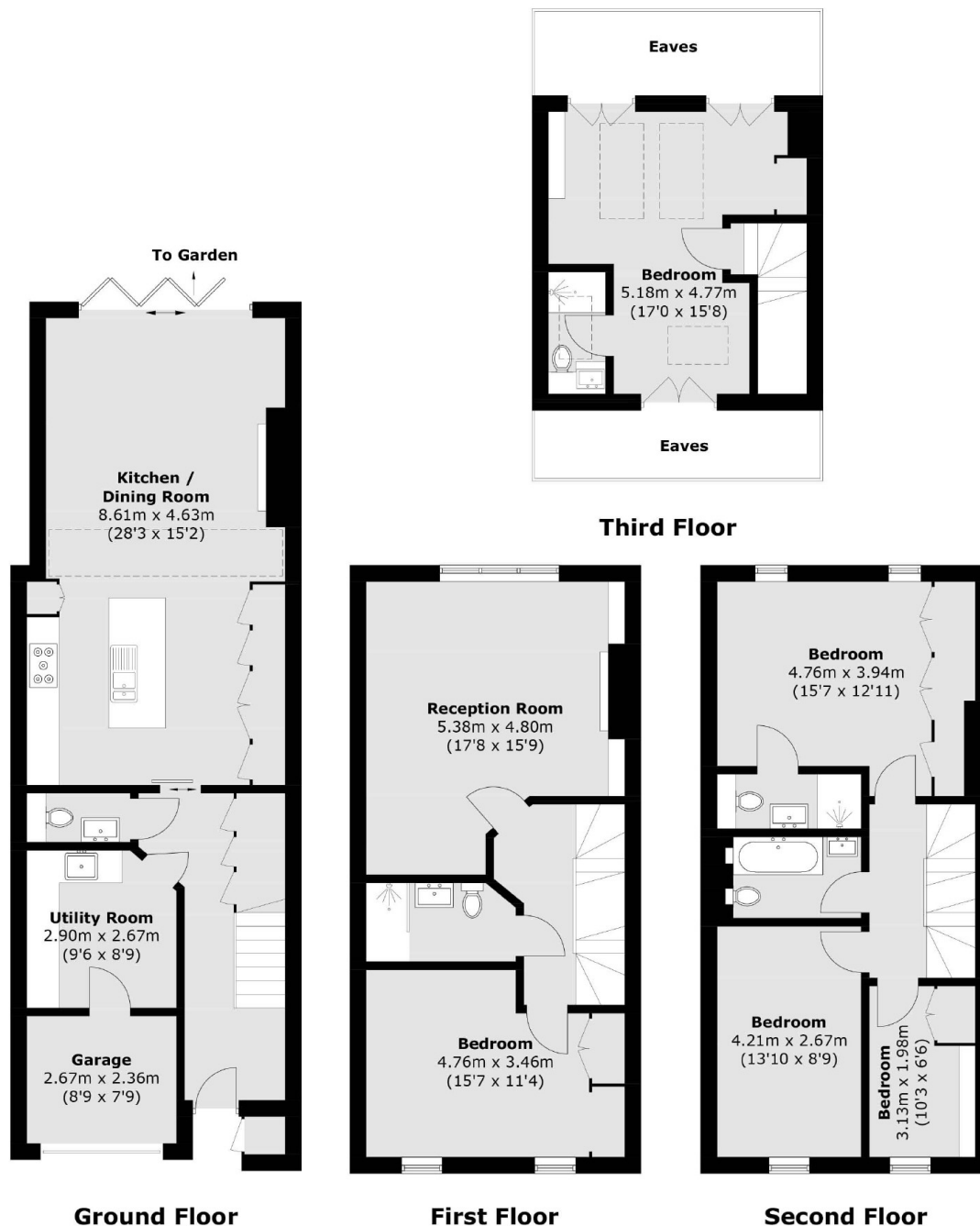
Further benefits include off street parking to the front for two cars, an integral garage, a utility room, a downstairs W.C and a stylishly landscaped rear garden.







# Candler Mews, Twickenham, TW1



Total area (approx.): 195.4 sq. m (2,103.2 sq. ft)  
(Including Garage & Excluding Eaves)  
External Cupboard area (approx.): 0.5 sq. m (5.4 sq. ft)