



Popes Grove, TW1

£1,400,000

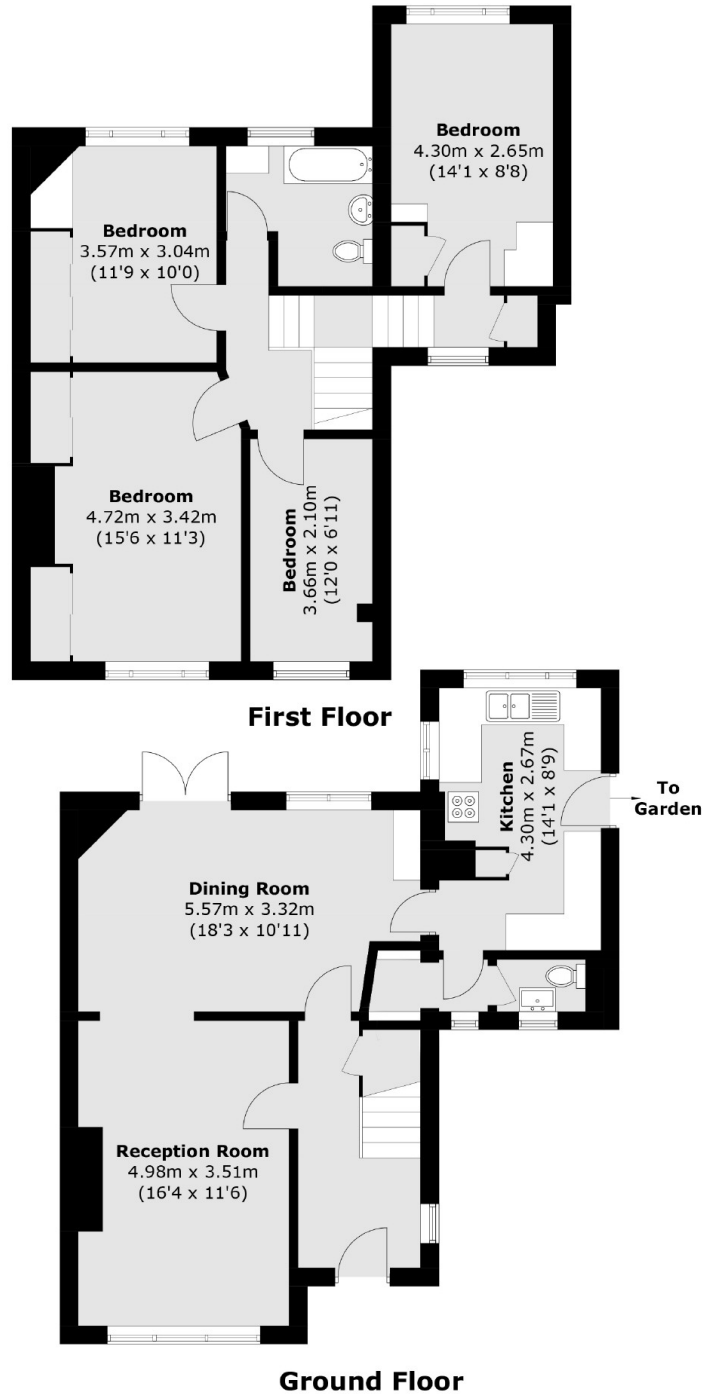
Offered with no onward chain and presented to the market for the first time in over 50 years is this four bedroom 1920's semi detached house that could become an incredible family home. It benefits from having a sunny South facing garden measuring approx 60ft in length and potential to extend to the side, loft and rear.

Popes Grove is widely regarded as one of Twickenhams most sought after locations lined with an array of stunning houses. Twickenham high street is just around the corner where there is a host of shops, pubs and restaurants. Twickenham and Strawberry Hill stations are also within easy reach and both offer links to London Waterloo.

Features

- No Onward Chain
- Potential To Extend
- Off Street Parking For Two Cars
- Four Bedrooms
- Side Access
- In Need Of Renovation

Popes Grove, Twickenham, TW1



Total area (approx.): 122.6 sq. m (1,319.6 sq. ft)