

## Lisbon Avenue, TW2

£2,475 Per calendar month

This three bedroom terraced family home offers a private garden, formal reception room, open plan kitchen/dining room, downstairs w.c and modern family bathroom, three bedrooms and off-street parking.

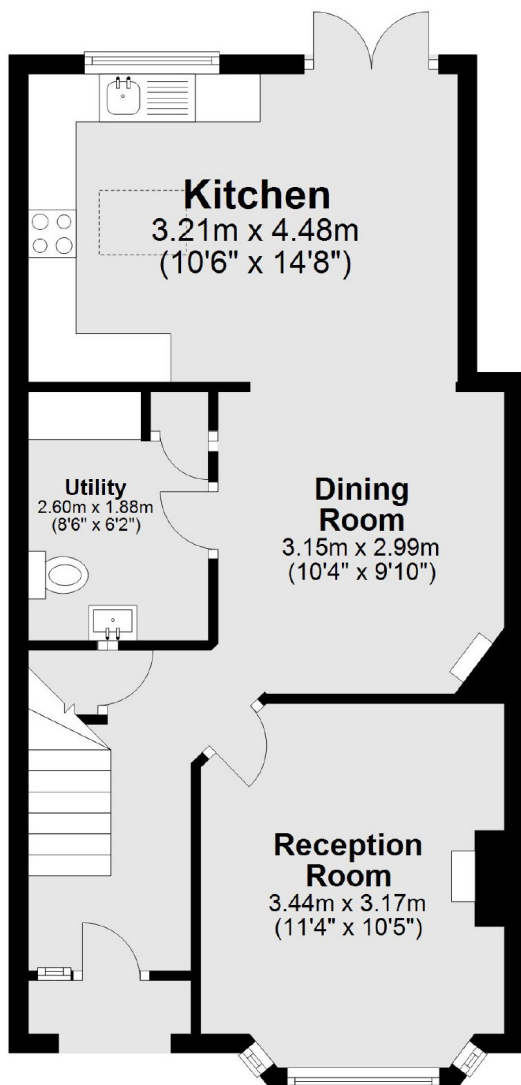
Lisbon Avenue is a quiet residential road, close to an array of transport links which will take you to Twickenham, Richmond and Teddington high streets. Fulwell mainline station is just under a mile and the area is renowned for its excellent schools.

### Features

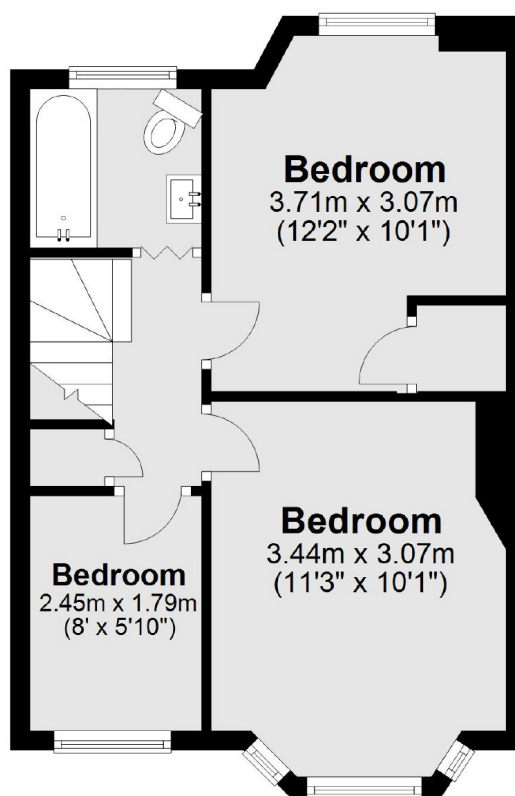
- Close To A316
- Three Bedrooms
- Off-Street Parking
- Private Rear Garden
- Downstairs Utility & W.C
- Schools Catchment

# Lisbon Avenue, Twickenham, TW2

## Ground Floor



## First Floor



Total area: approx. 84.2 sq. metres (906.3 sq. feet)