



## Whitton Road, TW1

£1,595 Per calendar month

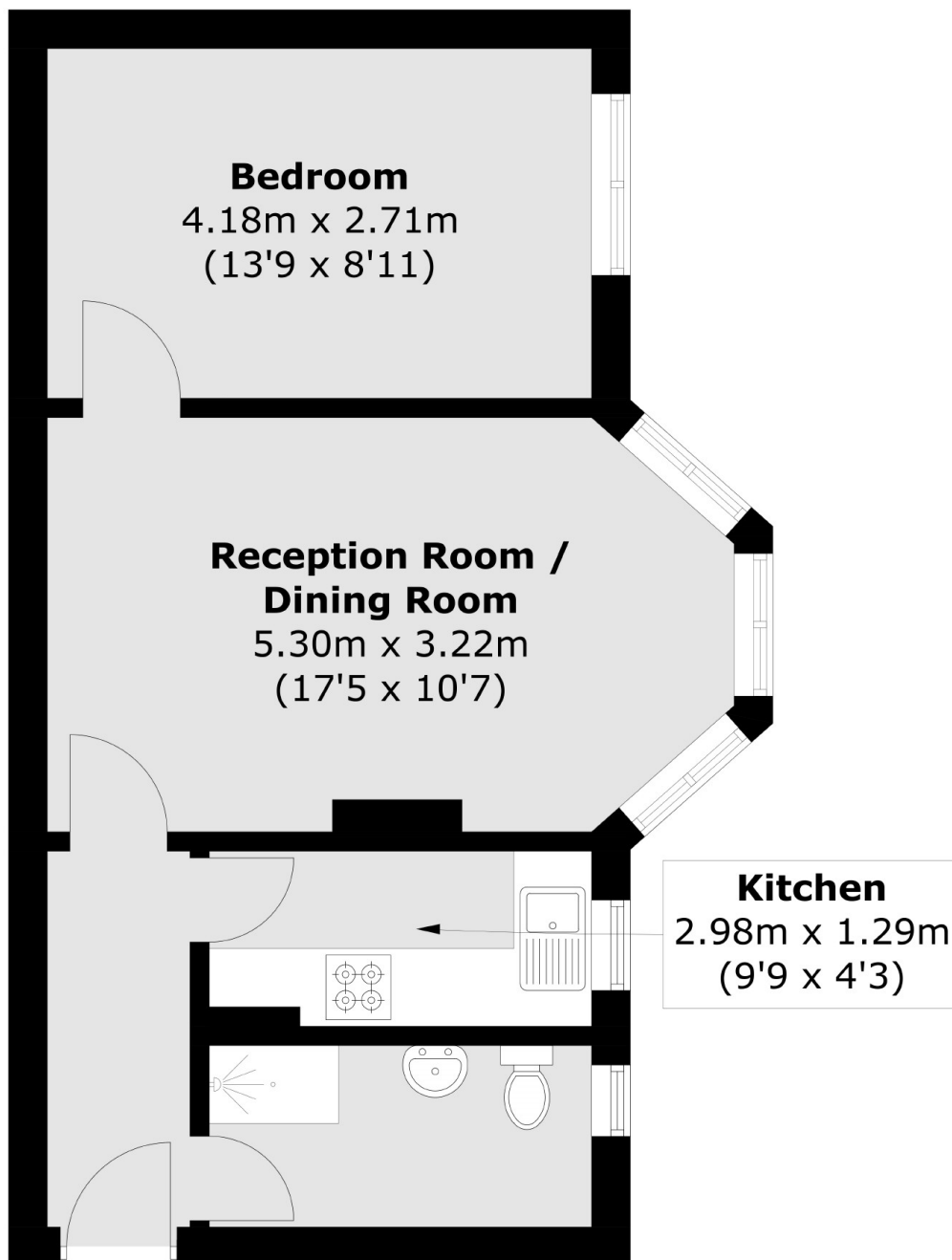
This one double bedroom apartment is located in an attractive block just 0.7 miles from Twickenham train station and high street. The property offers a large bright living room, a modern bathroom and a separate kitchen.

Whitton Road is located just a few hundred yards from Twickenham mainline station with its fast link to London Waterloo and also the town centre where you will find a vast array of shops, bars and restaurants.

### Features

Available immediately  
Moments From Transport  
Wooden Floors Throughout  
Spacious One Bedroom  
Fitted Kitchen  
Bright Inside

# Whitton Road, Twickenham, TW1



Total area (approx.): 40.8 sq. m (439.2 sq. ft)