



## Eel Pie Island, TW1

£2,550 Per calendar month

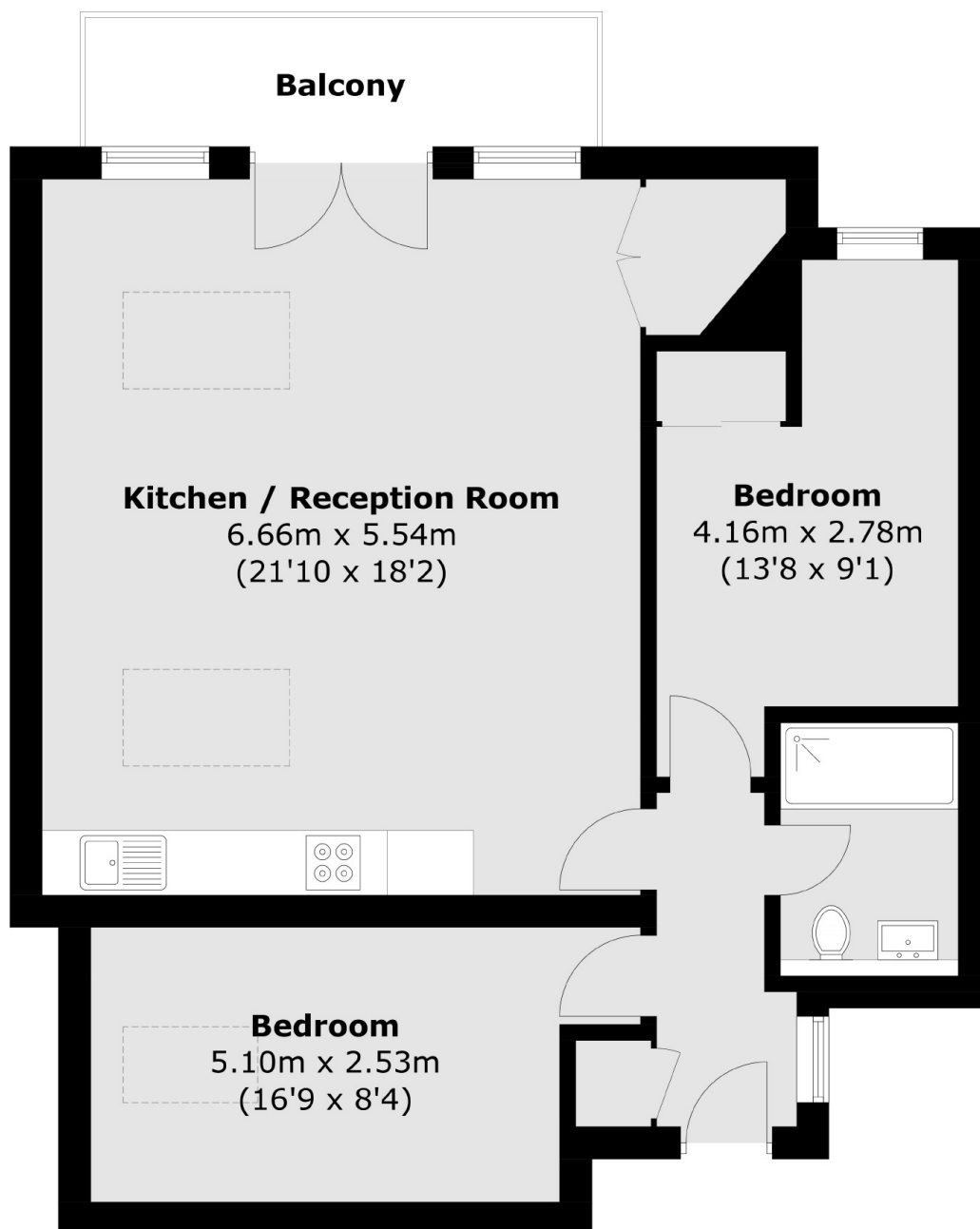
This completely unique two bedroom apartment located on the highly desirable Eel Pie Island. The property is finished to an exceptional standard throughout and has the bonus of a private balcony overlooking the River Thames & Communal Gardens.

Eel Pie Island has been home to The Rolling Stones and The Beatles and could be home to you! Access via a footbridge and close to Twickenham mainline station.

### Features

- Two Bedroom
- Rarely Available
- Open-Plan Living Area
- River Views
- Balcony
- Private Island

# Eel Pie Island, Twickenham, TW1



Total area (approx.): 74.0 sq. m (796.5 sq. ft)  
Balcony area (approx.): 5.7 sq. m (61.3 sq. ft)