



## Warburton Road, TW2

£495,000

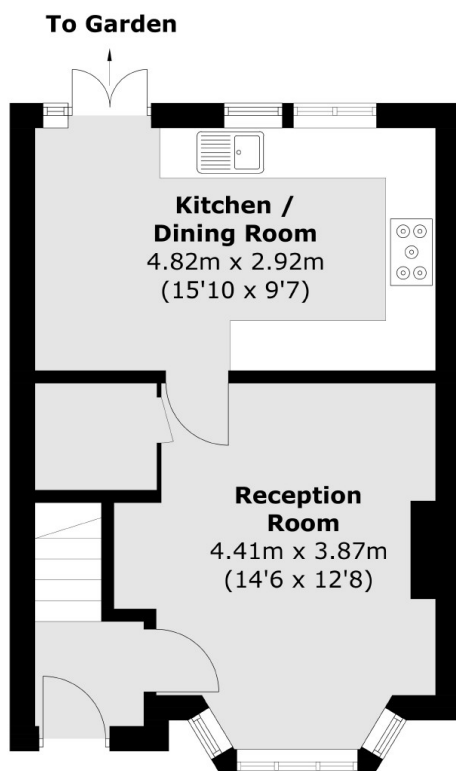
This two bedroom terrace home is perfect for first time buyers or investors with potential to extend and create off street parking STPP. There is a fantastic size rear garden and the house is being offered with no onward chain.

Warburton Road is accessed off Springfield Road which leads from Twickenham through to Whitton and is close to the high street where you will find a vast array of shops and café's. There is also a fast link to Waterloo from the mainline station as well as having a number of excellent schools nearby.

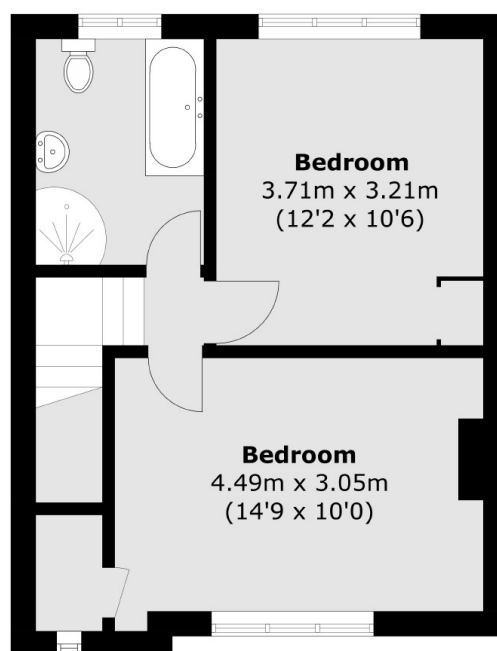
### Features

- Two Double Bedrooms
- Freehold House
- Potential To Extend STPP
- Potential For Off Street Parking
- Large Rear Garden
- No Onward Chain

# Warburton Road, Twickenham, TW2



**Ground Floor**



**First Floor**

Total area (approx.): 72.3 sq. m (778.3 sq. ft)