



May Road, TW2

£675,000

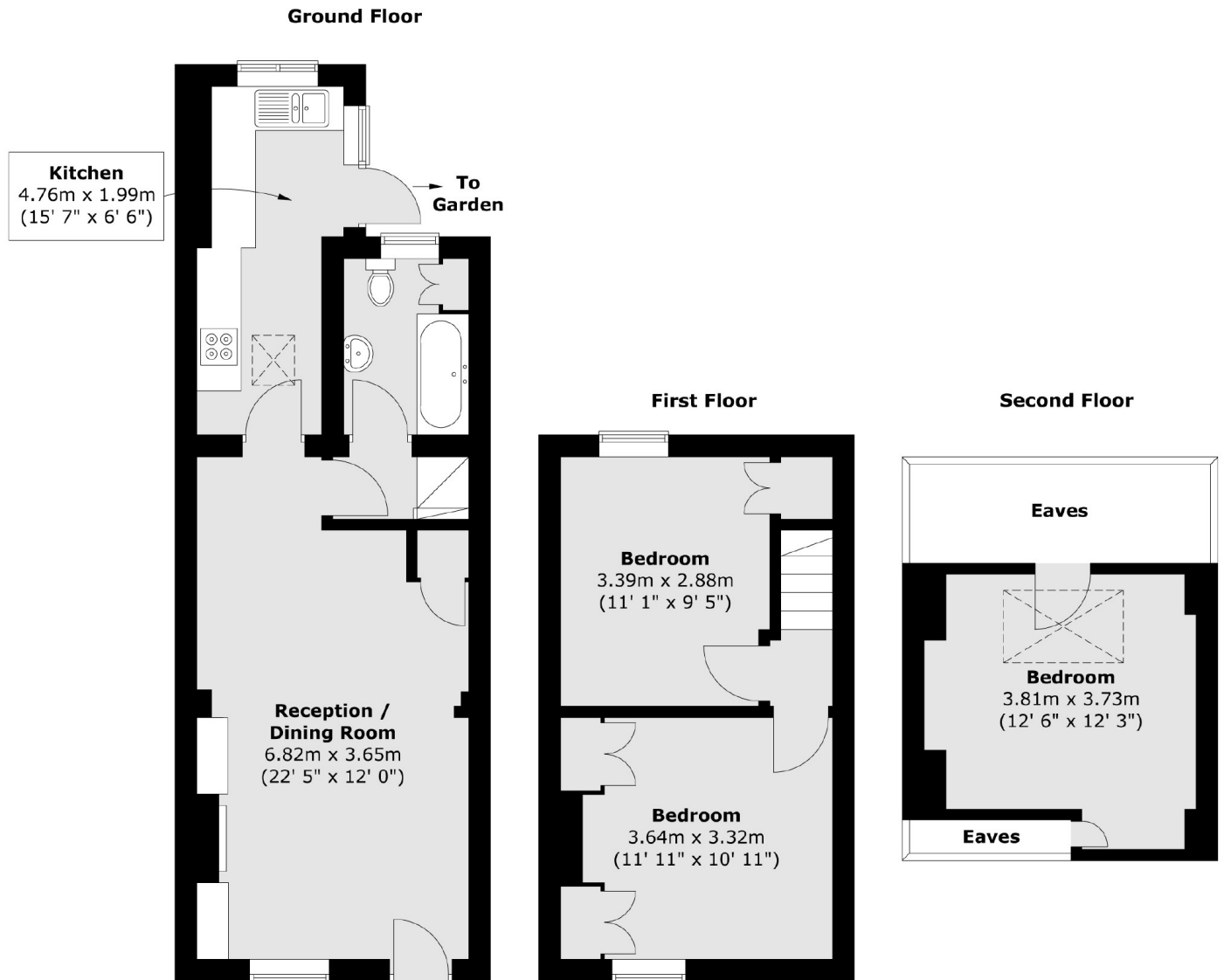
This fantastic two double bedroom Victorian cottage is set to fly off the shelf quickly as it benefits from being in excellent condition throughout, has a really useful carpeted loft room, a pretty, private South West facing garden and planning permission in place to extend the rear and loft.

May Road is situated just behind Twickenham Green whilst also being close to Twickenham high street, where you will find a vast array of shops, pubs and restaurants. There are a number of excellent schools in the area and both Twickenham and Whitton stations have a fast links to London Waterloo.

Features

- Two Double Bedrooms
- Victorian
- South West Facing Garden
- Excellent Condition
- Carpeted Loft Room
- Planning Permission In Place To Extend Further

May Road, Twickenham, TW2



Total area (approx.) : 77.9 sq. m (838 sq. ft)
(Excluding eaves)