



Manor Road, TW2

£500,000

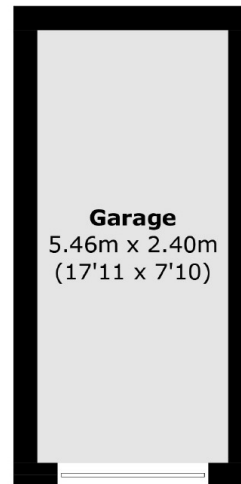
Located down a private residential cul-de-sac is this stunning two double bedroom maisonette. The property benefits from having a large private garden, a share of the freehold, a garage in a block, private residents access to beautiful communal gardens on the River Crane and a newly installed air-conditioning throughout and an air source heat pump.

Cranebrook is situated at the end of Manor Road and is close to excellent schools such as Waldegrave Girls and Trafalgar. Twickenham Green and the high street are also less than a mile away which offers a wide variety of shops, pubs and restaurants.

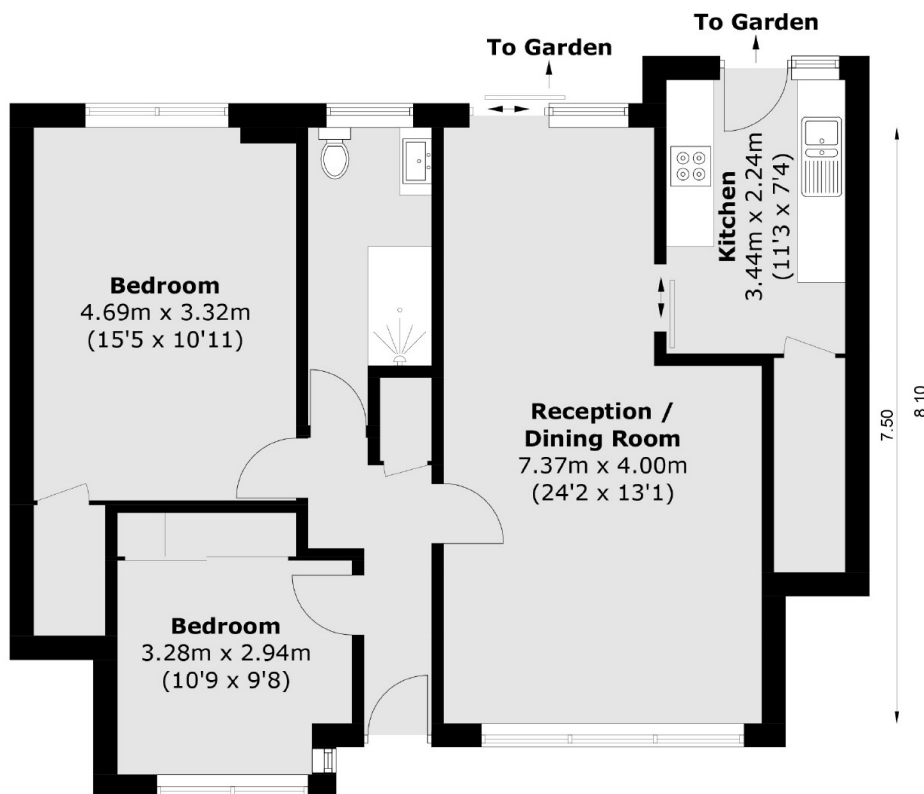
Features

- Private Walled Garden
- Garage & Gated Residents Parking
- Excellent Condition
- Share Of Freehold
- Access To Residents Gardens & River
- Air-conditioning & Newly Installed Air Source Heat Pump

Manor Road, Twickenham, TW2



(Not Shown In Actual
Location / Orientation)



Total area (approx.): 76.7 sq. m (825.6 sq. ft)
Garage: 13.1 sq. m (141.0 sq. ft)