



Whitton Road, TW1

£1,400,000

With one of the best and largest gardens in Twickenham, this beautiful three/four bedroom detached Edwardian home has been tastefully refurbished and offers everything a family could want including a utility room, potential to extend and a large outhouse/studio in the garden.

Whitton Road is located just a few hundred yards from Twickenham mainline station where there is a fast link to London Waterloo. There are a number of excellent schools in the area and the high street is nearby where you will find a vast array of shops, bars and restaurants.

Features

- Three/Four Bedrooms
- Detached
- Unique Large Rear Garden
- Potential To Extend
- Studio/Outhouse
- Utility Room



Whitton Road, TW1

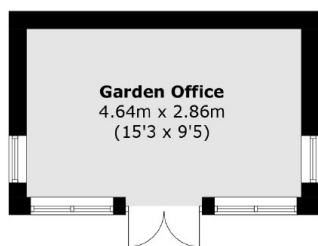
Arranged over three floors this fantastic home occupies almost 1900sq feet of well proportioned living accommodation and could be extended further if required. On the ground floor there is a large through reception which leads into a conservatory/garden room that could be modernised and access to the garden, a galley kitchen and a utility room with additional access to the garden.

On the first floor there are three double bedrooms and a modern three piece shower room complete with underfloor heating. The top floor provides bedroom number four also with underfloor heating and a separate W.C. Further benefits include a glassed veranda to the front of the house ideal for a spot of people watching, an outhouse/studio at the end of the garden, original coving, generous eaves storage and a new roof fitted in 2020.

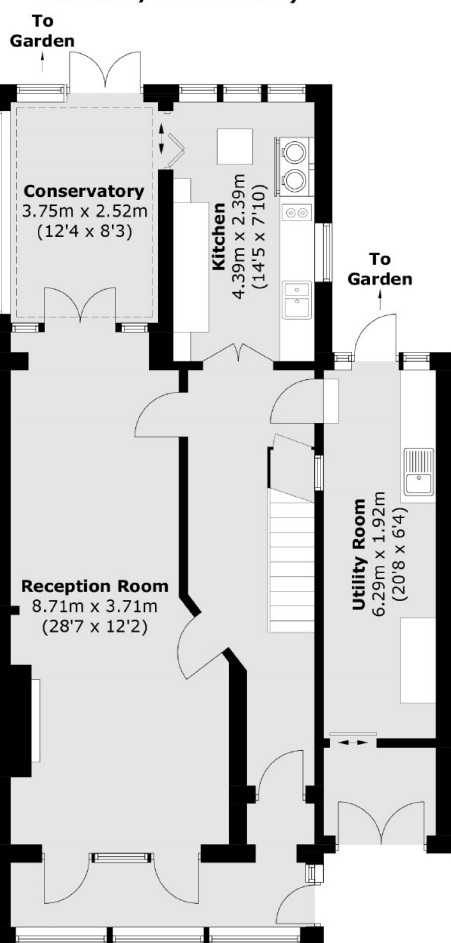
One of the biggest highlights of this amazing home is this incredibly large and enchanting rear garden that the current owners have carefully looked after and take pride in. There is nothing quite like this in the local area and is a must see!



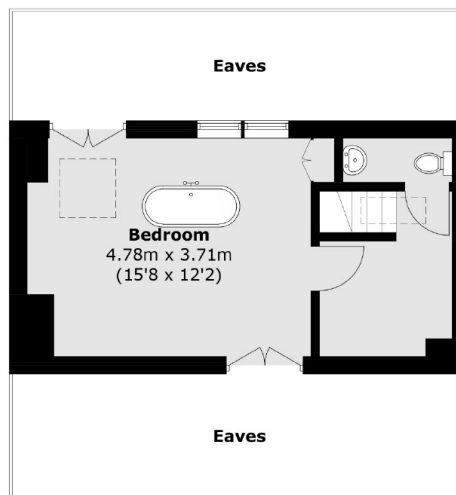
Whitton Road, Twickenham, TW1



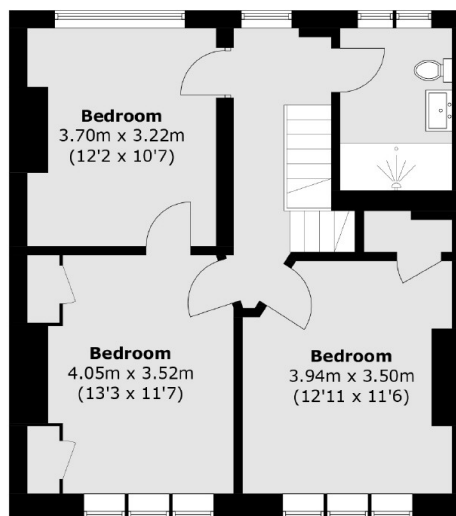
(Not Shown In Actual
Location / Orientation)



Ground Floor



Second Floor



First Floor

Total area (approx.): 172.8 sq. m (1,860.0 sq. ft)
(Excluding Garden Office / Eaves)
Garden Office (approx.): 13.4 sq. m (144.2 sq. ft)