



## Strawberry Vale, TW1

£10,995 Per calendar month

A spectacular interior designed detached home, magnificently positioned on the banks of the river Thames with a boathouse and driveway parking.

The closest train station is Strawberry Hill which is approximately 0.6 Miles away and provides links to London Waterloo via Richmond or Wimbledon. Local bus services run from approximately 0.2 miles away and offer direct links to Teddington High Street, Hampton, and Twickenham.

### Features

- Six Bedrooms
- Off-Street Parking
- 140ft Rear Garden
- Boat House
- Exquisite Grounds
- Recently Refurbished



## Strawberry Vale, TW1

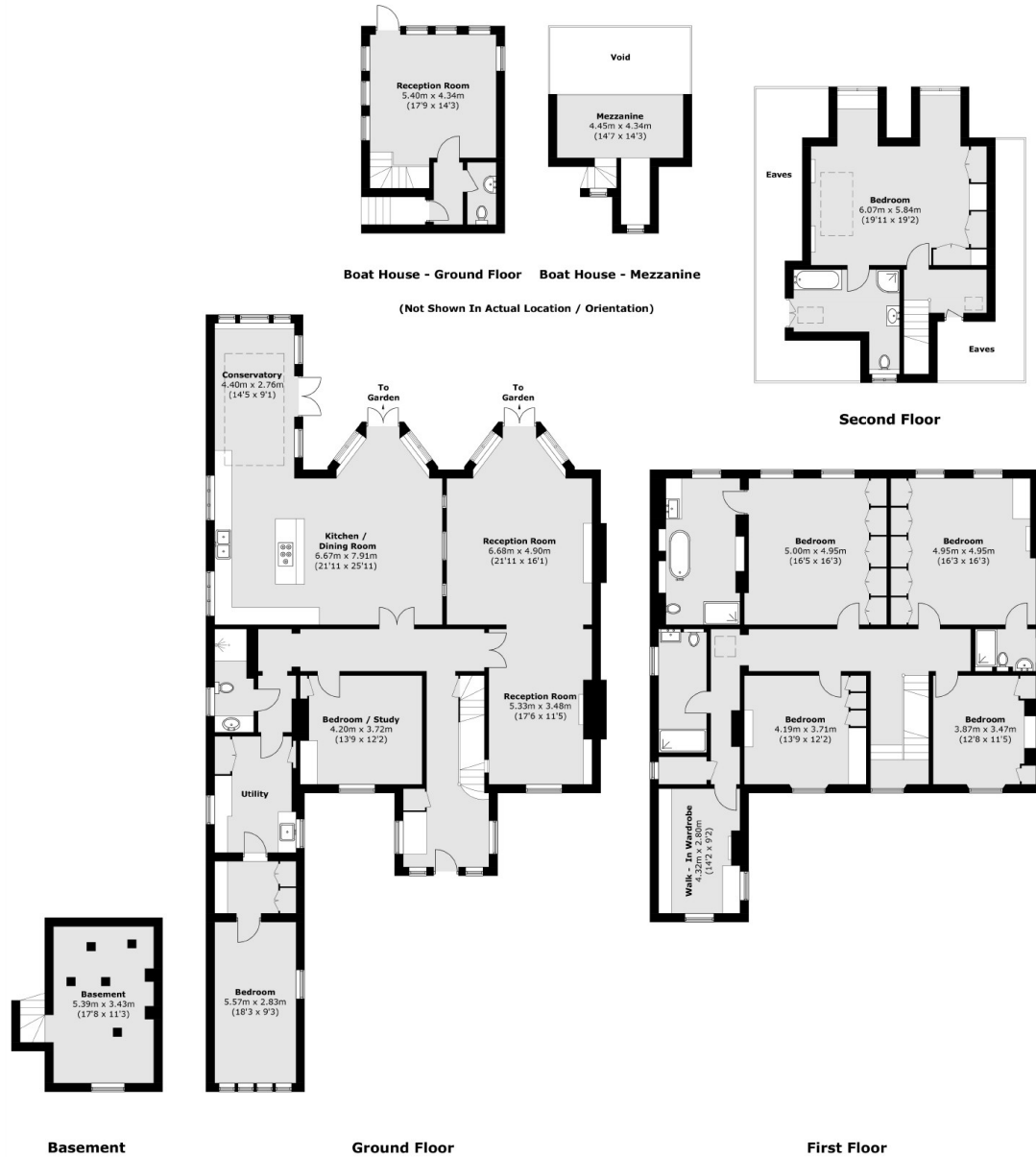
Located on the banks of the River Thames in Strawberry Hill, and internally featuring over 4400 sq ft of living space, lies the exquisite Whyte House. This exceptional property lends itself as a unique family home of the highest quality with an abundance of period features delicately and expertly connected through contemporary finishes, materials and lines.

This masterpiece really is the perfect juxtaposition between period charm and luxurious modern-day living. There simply aren't many homes of this standard and location. The ground floor boasts four reception rooms, two of which overlook the landscaped gardens providing an outstanding view the of the River. A sixth bedroom on the ground floor provides exceptional options for a live in nanny or visiting family.

The surrounding area is well suited for family life with numerous recreational facilities, fabulous golf courses, riding stables, and local sports teams. The much acclaimed Lensbury Club is easily accessible by car or public transport from the property. The renowned private sports club provides an extensive range of sailing and leisure facilities.



# Strawberry Vale, Strawberry Hill, TW1



Total area (approx.): 415.1 sq. m (4,468.0 sq. ft)  
Boat House: 38.9 sq. m (418.7 sq. ft)  
(Excluding Eaves & Void)