



## Heath Road, TW1

£399,950

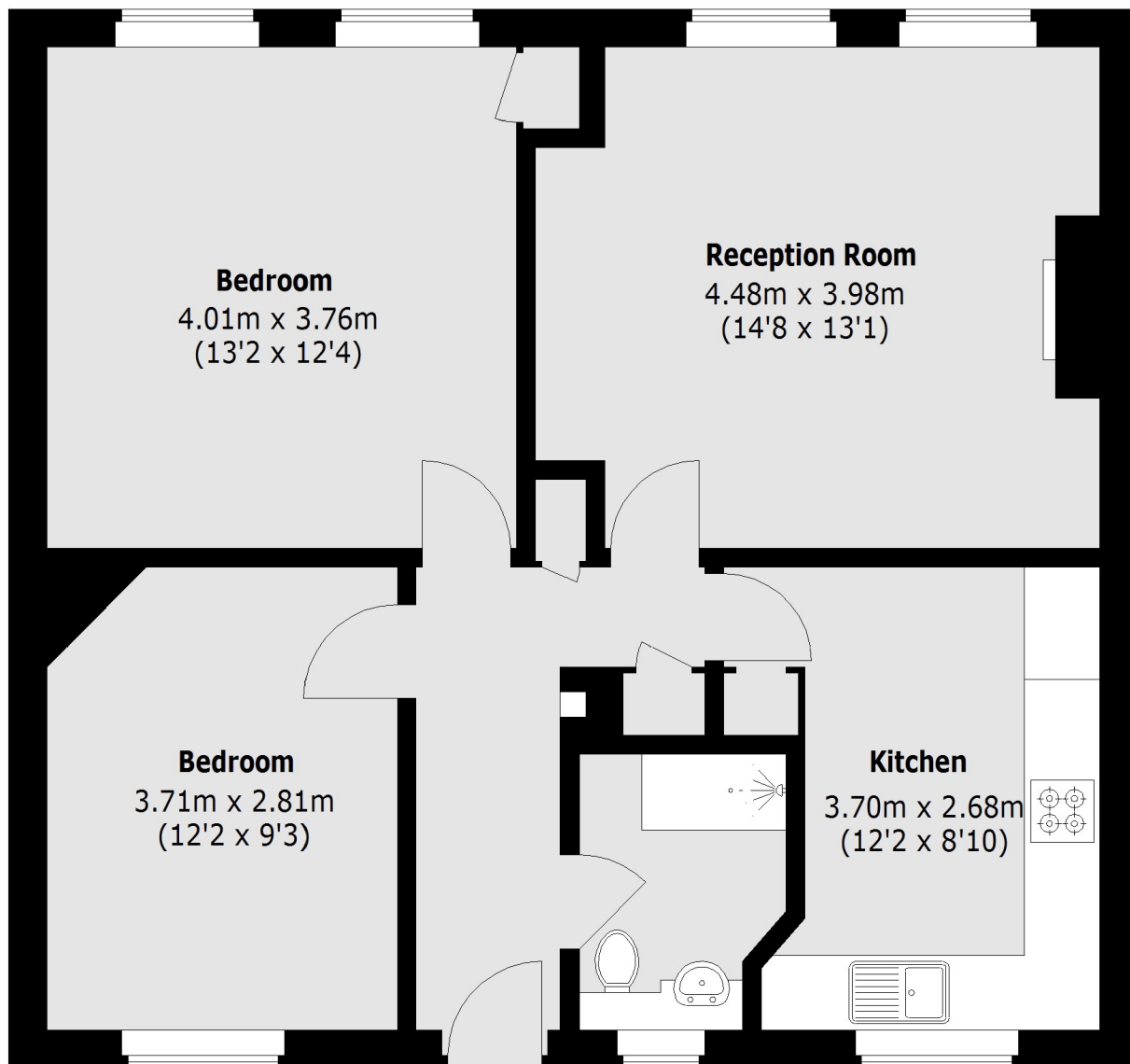
Located in the heart of Twickenham town centre is this impressive two double bedroom top floor apartment in excellent condition. The property benefits from having a long lease and access to well maintained communal gardens.

Heath Road is the high street running through the heart of the town centre and it offers a vast array of shops, pubs, café's and restaurants. Twickenham mainline station provides a fast train to London Waterloo and there are also various bus routes in and out of Twickenham and through to Richmond.

### Features

- Two Double Bedrooms
- Communal Gardens
- Central Location
- Recently Extended Lease
- Good Condition
- Security Entry Phone System

# Heath Road, Twickenham, TW1



## First Floor

Total area (approx.): 66.1 sq. m (711.4 sq. ft)