



Hounslow Road, TW2

£625,000

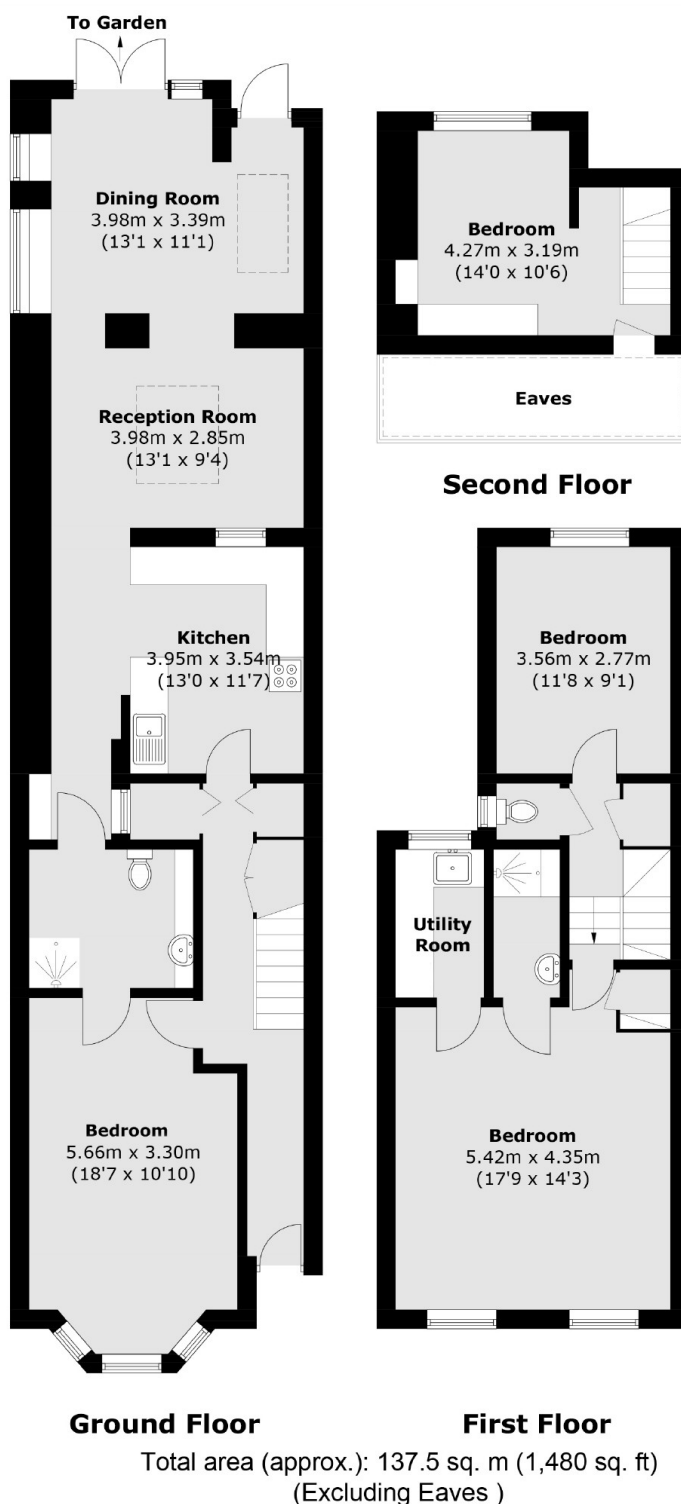
A generous-sized Victorian home with 1480 sq ft of accommodation. Currently designed for multi-generational living with spacious rooms. The property could easily be modified to create a large traditional family home. The house also features an above average-sized rear garden and patio area for entertaining. Offered with no onward chain.

Superbly located close to Whitton High Street with its full range of local shops and amenities. Ideal for commuters and families, with a regular fast link train service to London Waterloo and excellent schools.

Features

- Four Bedrooms
- Two Bathrooms
- Excellent Room Sizes
- Substantial Rear Garden
- Versatile Accommodation
- Viewing Highly Recommended

Hounslow Road, Whitton, TW2



Dexters

Twickenham
84 Heath Road
Twickenham
TW14BW
Sales
020 8744 0074

Energy Rating: - We aim to make our particulars both accurate and reliable. However they are not guaranteed; nor do they form part of an offer or contract. If you require clarification on any points then please contact us, especially if you're traveling some distance to view. Please note that appliances and heating systems have not been tested and therefore no warranties can be given as to their good working order.

 **RICS** | Regulated
Estate Agent
and Letting Agent

dexters.co.uk