



Fulwell Park Avenue, TW2

£725,000

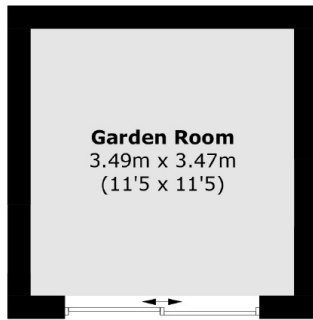
With beautiful views overlooking Crane Park is this stunning three double bedroom mid terrace family home. The property benefits from having an eye-catching open plan kitchen with bi-fold doors, two bath/shower rooms and a detached studio/home office in the garden.

Fulwell Park Avenue is a quiet residential road close to an array of transport links which will take you to Twickenham, Richmond and Teddington high streets. Fulwell mainline station is just under a mile and the area is renowned for its excellent schools.

Features

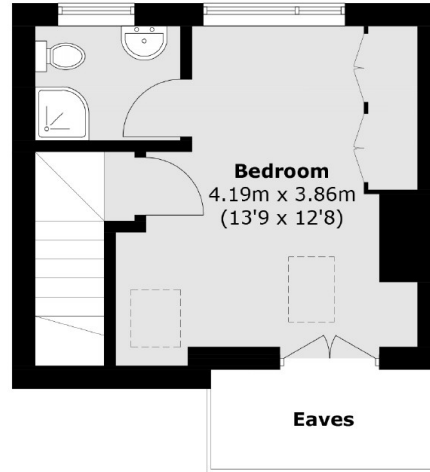
- Three Double Bedrooms
- Excellent Condition
- Rear Access To Crane Park
- Studio/Home Office
- Two Bath/Shower Rooms
- Open Plan Kitchen/Family Room

Fulwell Park Avenue, Twickenham, TW2

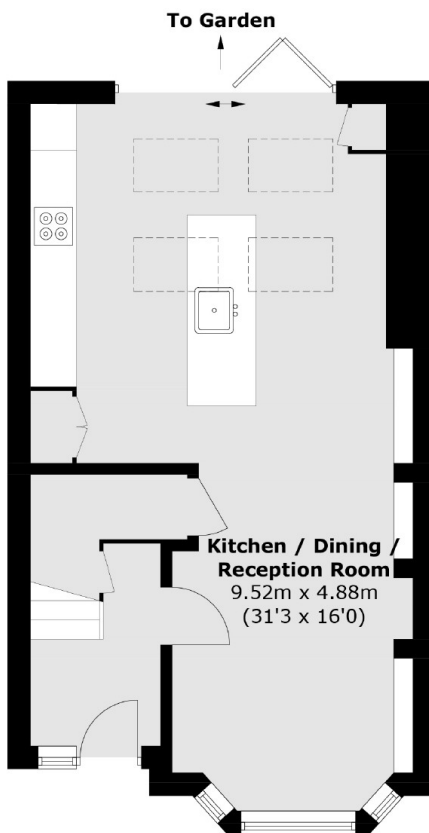


Garden Room
3.49m x 3.47m
(11'5 x 11'5)

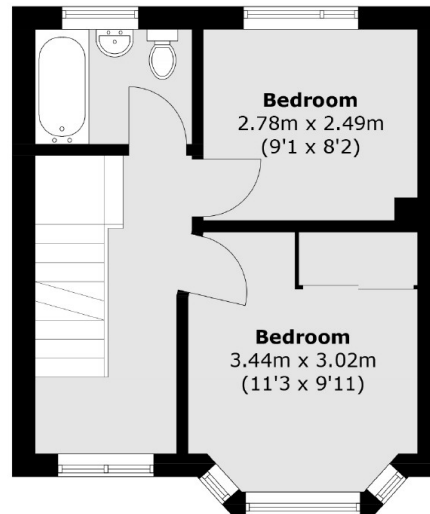
(Not Shown In Actual
Location / Orientation)



Second Floor



Ground Floor



First Floor

Total area (approx.): 94.0 sq. m (1,011.8 sq. ft)
Garden Room (approx.): 12.4 sq. m (133.5 sq. ft)
(Excluding Eaves)