



Strawberry Vale, TW1

£1,195,000

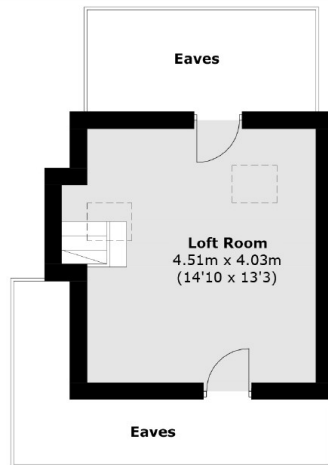
This fabulous three bedroom semi detached 1930's family home comes with an amazing 150ft South West facing rear garden, a detached garage, potential to extend and off street parking to the front for two cars.

Strawberry Vale runs adjacent to the River Thames and is close to Teddington and Twickenham town centres, which offer a vast array of shops, bars, restaurants and independent boutiques. Strawberry Hill and Twickenham mainline stations are just half a mile away and provide routes to and from the city.

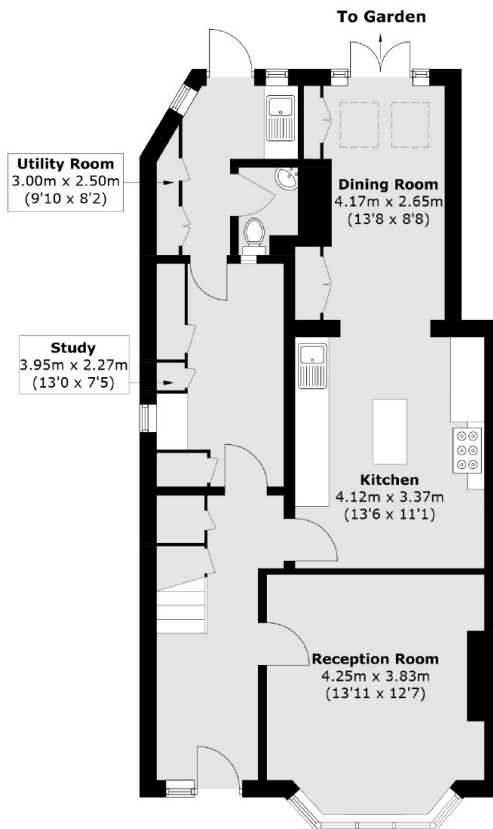
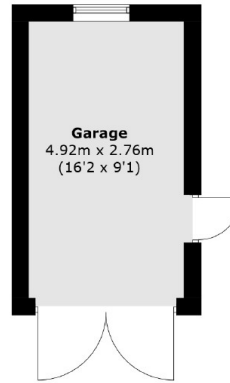
Features

- Three Bedrooms & An Extra Loft Room
- Off Street Parking For Two Cars
- Potential To Extend
- Detached Garage
- Amazing 150ft South West Facing Garden
- Downstairs W.C

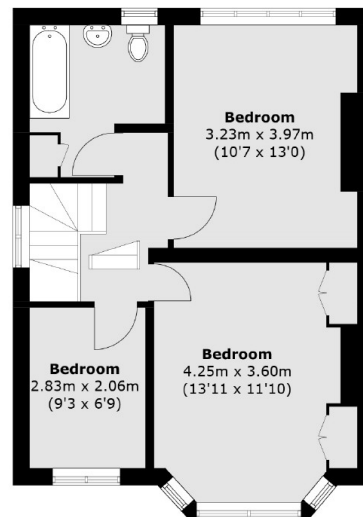
Strawberry Vale, Strawberry Hill, TW1



Second Floor



Ground Floor



First Floor

Total area (approx.): 135.5 sq. m (1458.3 sq. ft)
Garage area (approx.): 14.0 sq. m (150.6 sq. ft)
(Excluding Eaves)