



Staines Road, TW2

£949,950

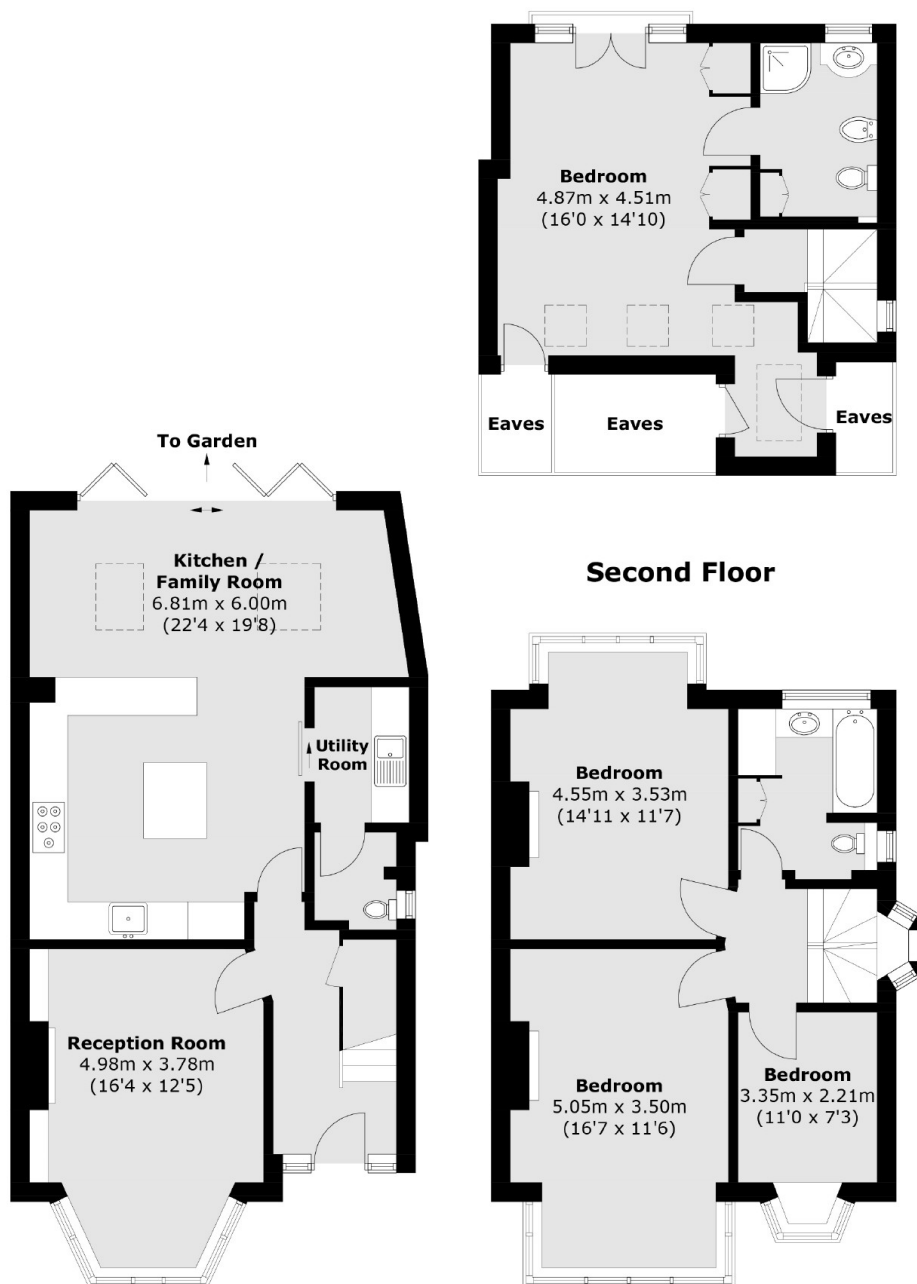
A fine example of an impressive four bedroom 1930's house that offers everything a family could want. It benefits from having two bathrooms, a downstairs W.C, an eye catching open plan kitchen/family room with bi-fold doors opening onto a large garden measuring approx 100ft in length.

Staines Road offers convenient access in and out of Twickenham town centre where you will find a vast array of shops, pubs and restaurants. Both Twickenham and Strawberry Hill stations provide a link to London Waterloo and the area is renowned for some outstanding schools such as Waldegrave Girls, Archdeacon and Trafalgar.

Features

- Four Bedrooms
- Two Bathrooms
- Excellent Condition
- Large Garden Approx 100ft
- Open Plan Kitchen/Family Room
- Great School Catchments

Staines Road, Twickenham, TW2



Ground Floor

First Floor

Total area (approx.): 145.8 sq. m (1,569.4 sq. ft)
(Excluding Eaves)