



## Whitton Road, TW1

£750,000

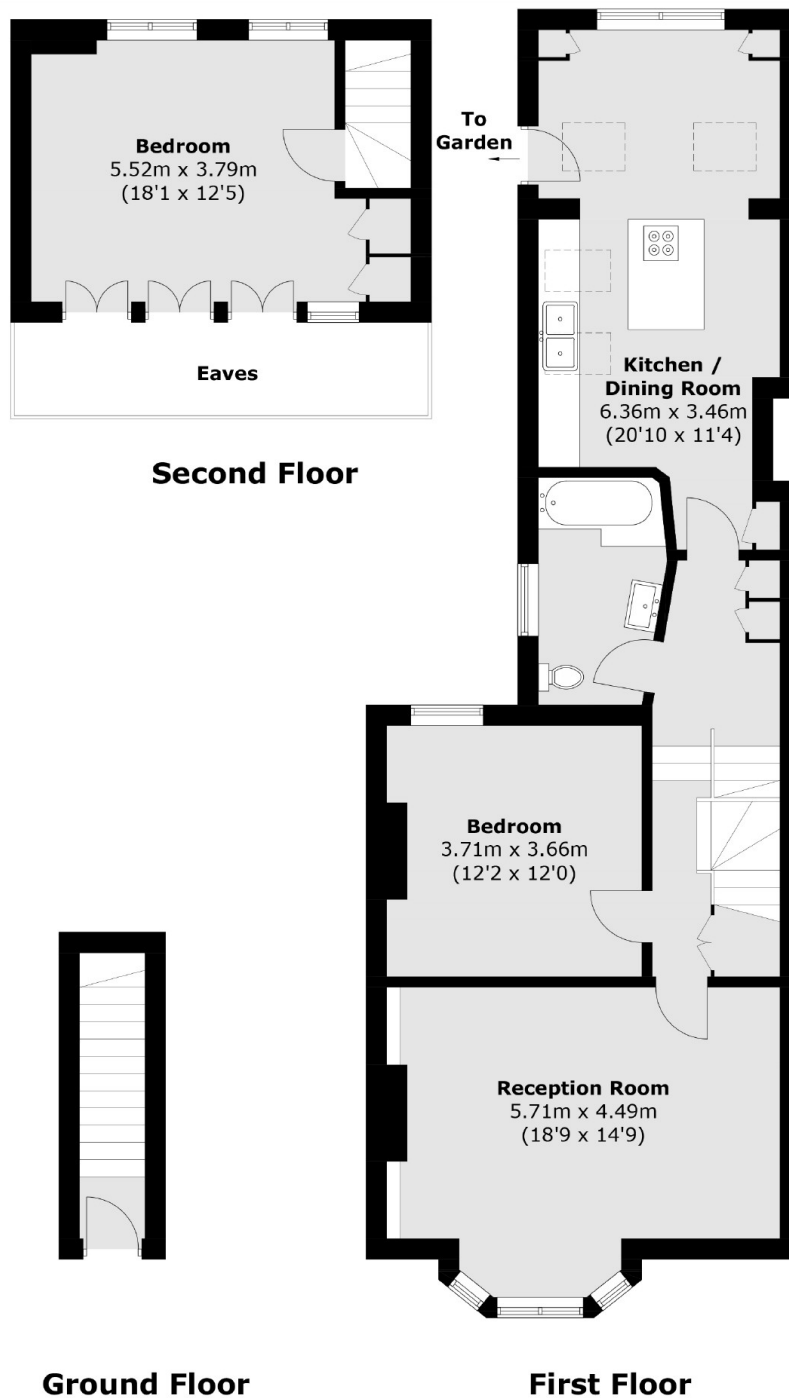
Arguably one of the finest apartments in the area is this large two double bedroom split-level period home which offers a host of original features with a twist of modern living. Further benefits include a private garden, side access and a share of the freehold.

Whitton Road is located just a few hundred yards from Twickenham mainline station where there is a fast link to London Waterloo. There are a number of excellent schools in the area and the high street is nearby where you will find a vast array of shops, bars and restaurants.

### Features

- Two Double Bedrooms
- Split Level
- Private Garden
- Share Of Freehold
- Excellent Condition
- Potential To Extend The Loft

# Whitton Road, Twickenham, TW1



Total area (approx.): 104.4 sq. m (1,123.7 sq. ft)  
(Excluding Eaves)