



Langhorn Drive, TW2

£299,950

Set in a highly desirable development, this two double bedroom modern ground floor flat is located less than a mile from Twickenham station and is perfect as a first time purchase or as an investment.

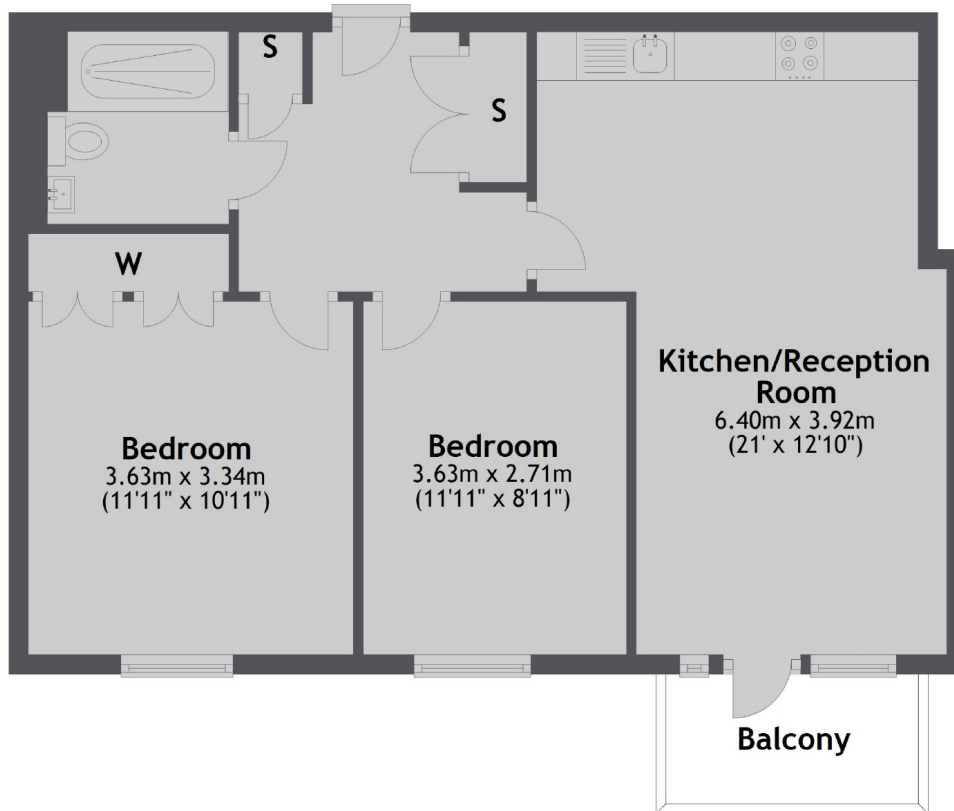
Challenge Court is located with both Twickenham and Whitton town centres within easy reach where you will find a vast array of shops, pubs and restaurants. Twickenham mainline station with its fast trains to London Waterloo is just over half a mile away.

Features

- Ground Floor
- Double Bedrooms
- Private Balcony
- Underground Parking
- Popular Development
- Close To Transport Links

Langhorn Drive, Twickenham, TW2

Ground Floor



Total area: approx. 59.6 sq. metres (642.0 sq. feet)