



## Nelson Road, TW2

£549,950

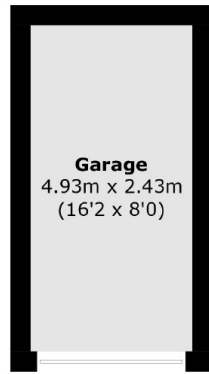
This fantastic three double bedroom house is perfect for the growing family as it benefits from having generous living space including a modern kitchen with integrated appliances, a new bathroom, a stylishly landscaped rear garden and a detached garage.

Nelson Road is situated just off Whitton high street where you will find a vast array of shops, pubs and cafés including Starbucks. The area is also ideal for commuters as there is a fast link to London Waterloo via the mainline station as well as various bus routes into Twickenham town centre.

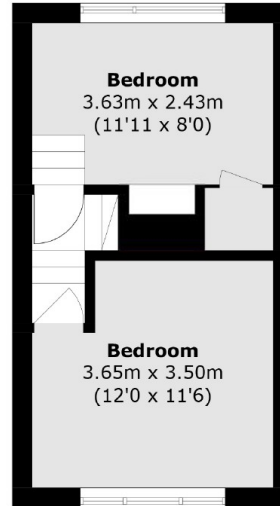
### Features

- Three Double Bedrooms
- Excellent Condition
- Modern Bathroom
- Stylish Landscaped Garden
- Detached Garage
- Central Location

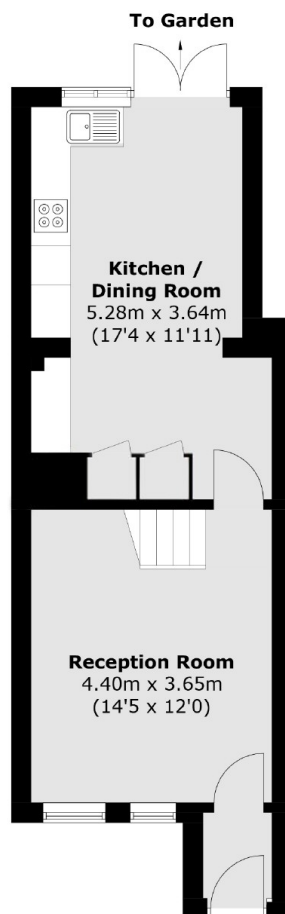
# Nelson Road, Twickenham, TW2



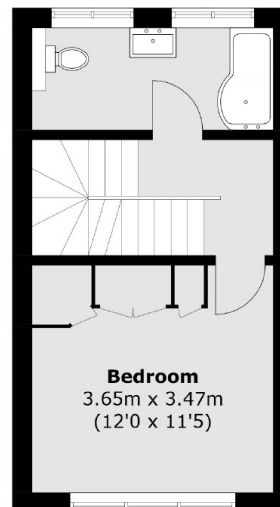
(Not Shown In Actual  
Location / Orientation)



**Second Floor**



**Ground Floor**



**First Floor**

Total area (approx.): 90.2 sq. m (970.8 sq. ft)  
Garage: 12.1 sq. m (130.2 sq. ft)