



## Redway Drive, TW2

£1,100,000

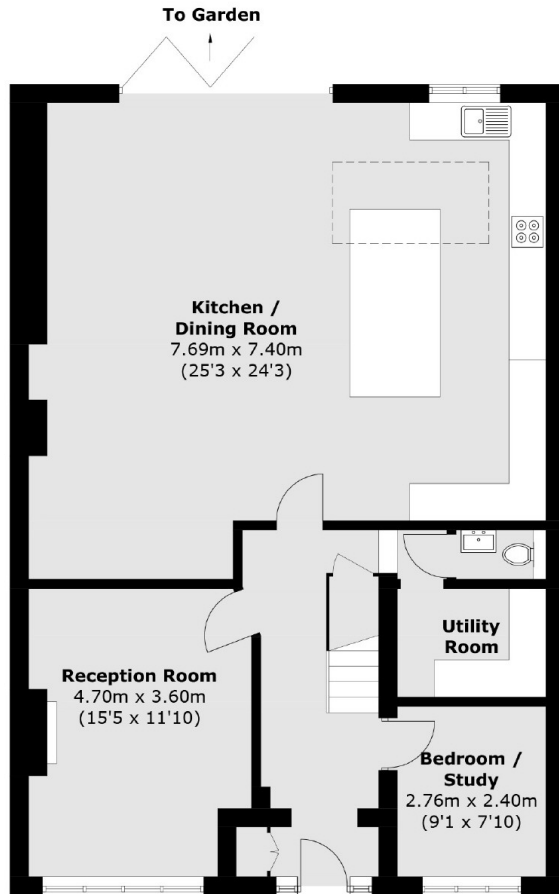
Offered with no onward chain is this stunning four/five bedroom semi-detached family home. The property benefits from having an eye catching kitchen/family room complete with bi-fold doors to the garden, off street parking for several cars, a utility room and a downstairs W.C.

Redway Drive is a highly sought after road nestled behind the town centre where you will find a selection of shops, café's and restaurants. Whitton mainline station has a fast link to London Waterloo which is just a few hundred yards away and there are also a number of good schools nearby.

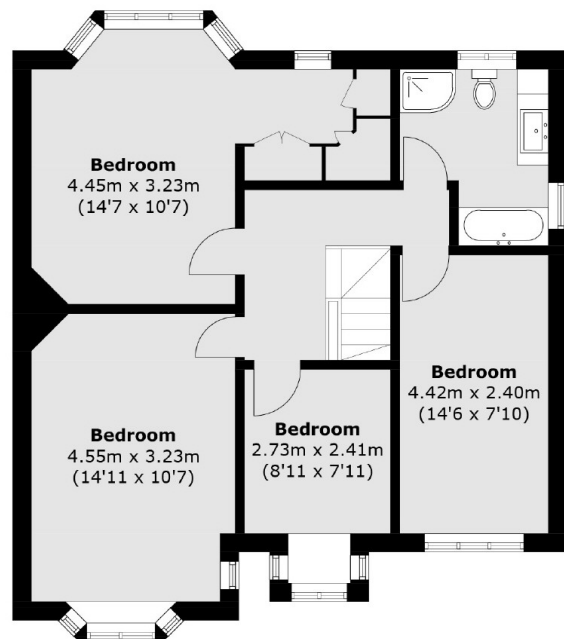
### Features

- Four/Five Bedrooms
- Utility Room
- Downstairs W.C
- Stylish Open Plan Kitchen/ Family Room
- Off Street Parking For Several Cars
- Side Access

# Redway Drive, Whitton, TW2



**Ground Floor**



**First Floor**

Total area (approx.): 171.2 sq. m (1,842.8 sq. ft)