



Nelson Road, TW2

£399,950

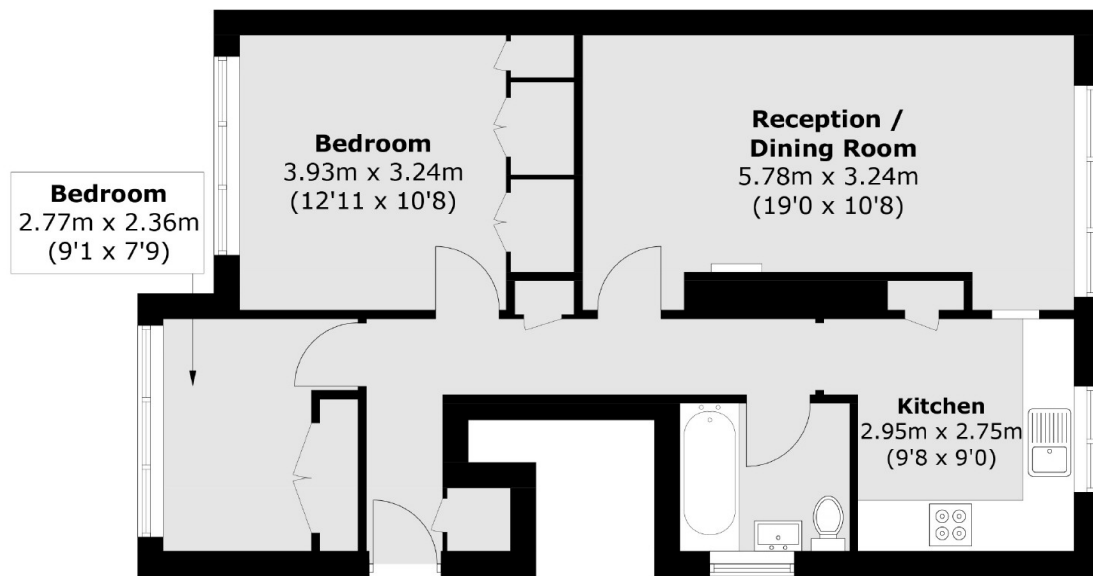
Situated in a highly sought after spot, is this beautiful two bedroom ground floor maisonette that benefits from having its own large private garden, an off street parking space and a long lease with low charges.

Nelson Road is situated just off Whitton high street where you will find a vast array of shops, pubs and cafés including Starbucks. The area is also ideal for commuters as there is a fast link to London Waterloo via the mainline station and there are also a number of good schools nearby.

Features

- Two Bedrooms
- Ground Floor
- Large Private Garden
- Off Street Parking Space
- Excellent Condition
- Long Lease & Low Charges

Nelson Road, Whitton, TW2



Total area (approx.): 58.1 sq. m (625.3 sq. ft)