



Lyndhurst Avenue, TW2 £675,000

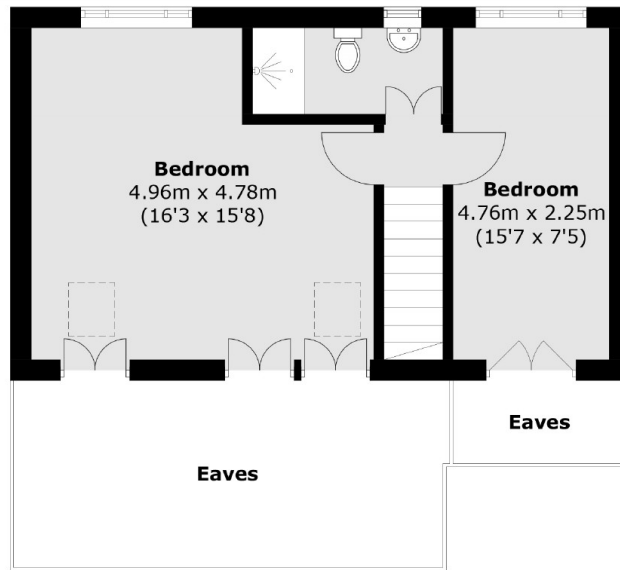
Offered with no onward chain is this spacious two/three bedroom semi detached bungalow providing almost 1200sq feet of generous living accommodation. The property benefits from having two bath/shower rooms, off street parking and a detached garage.

Lyndhurst Avenue is adjacent to the River Crane and Crane Park. Both Whitton high street and Whitton mainline station are just over a mile away which offers you a fast link to London Waterloo and there are a number of good schools nearby.

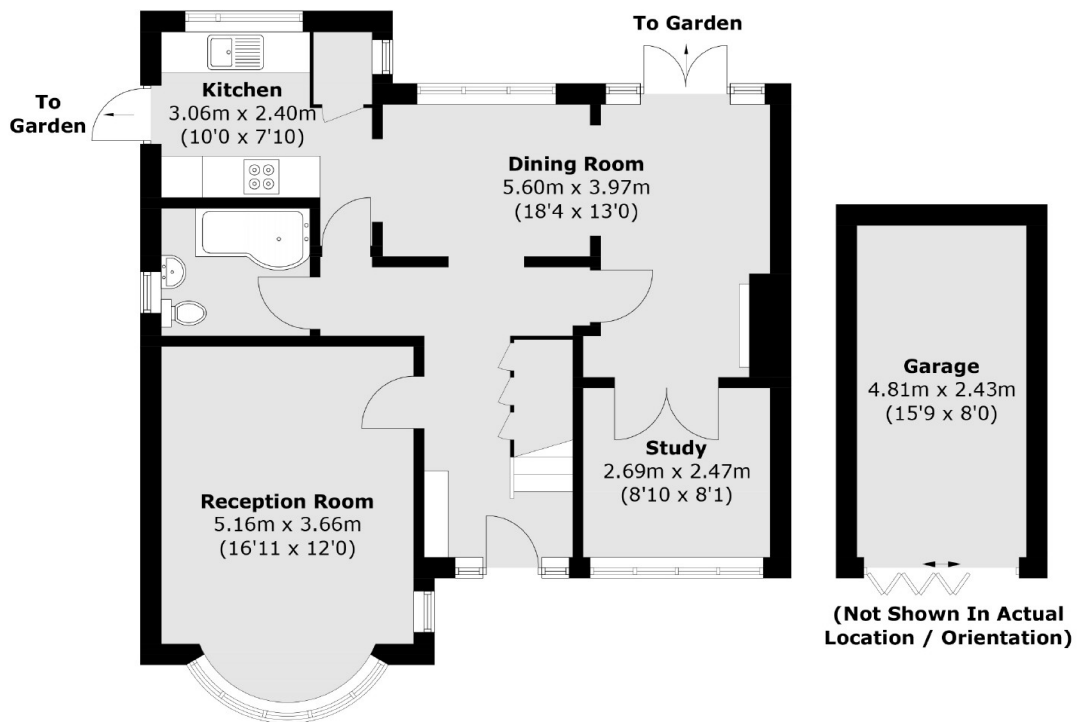
Features

- Detached Garage
- Mature Rear Garden
- Off Street Parking
- No Onward Chain
- Two Bath/Shower Rooms
- Spacious

Lyndhurst Avenue, Whitton, TW2



First Floor



Ground Floor

Total area (approx.): 108.1 sq. m (1,163.6 sq. ft)
Garage (approx.): 12.1 sq. m (130.2 sq. ft)
(Excluding Eaves)