



## Queens Road, TW1

£495,000

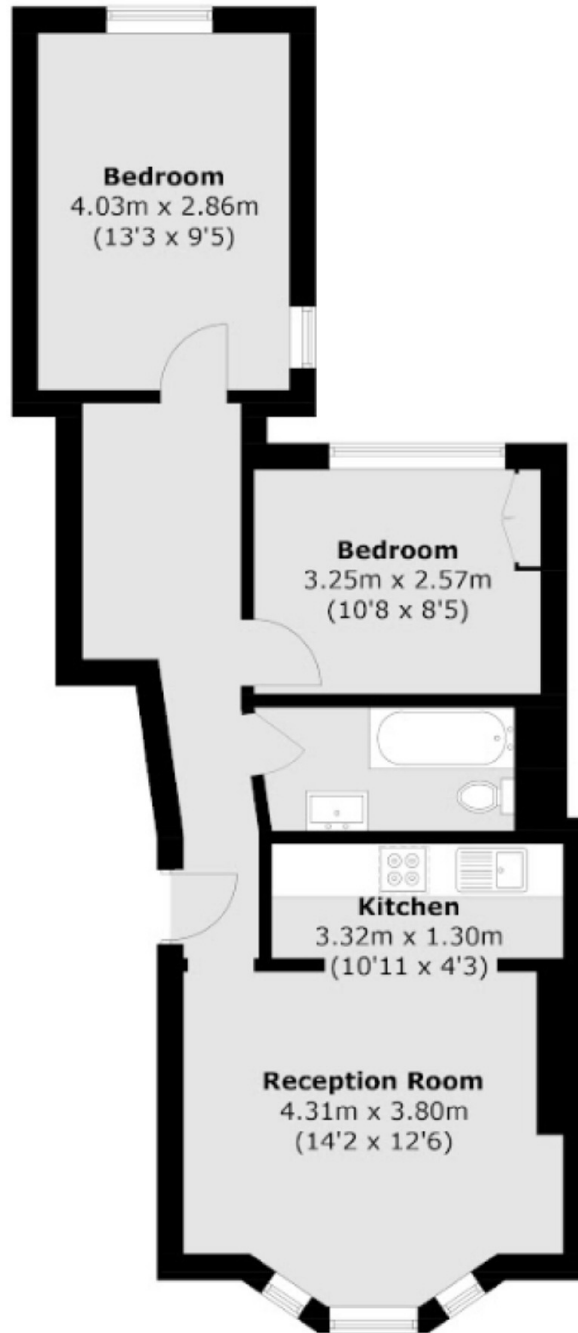
A fine example of a beautiful two double bedroom Victorian conversion apartment located in the heart of Twickenham. The property benefits from having a share of the freehold along with access to a communal garden at the rear.

Queens Road is centrally located for access onto Twickenham high street where you will find a vast array of shops, pubs and restaurants. The mainline station with fast links to Waterloo is only a few hundred yards away. The river Thames and the famous Eel Pie Island are also within a short walk.

### Features

- Two Double Bedrooms
- Excellent Condition
- Communal Garden
- Share Of Freehold
- Central Location
- Three Piece Bathroom With Underfloor Heating

Queens Road,  
Twickenham, TW1



### Ground Floor

Total area (approx.): 54.4 sq. m (585.6 sq. ft)