



## Fifth Cross Road, TW2

£575,000

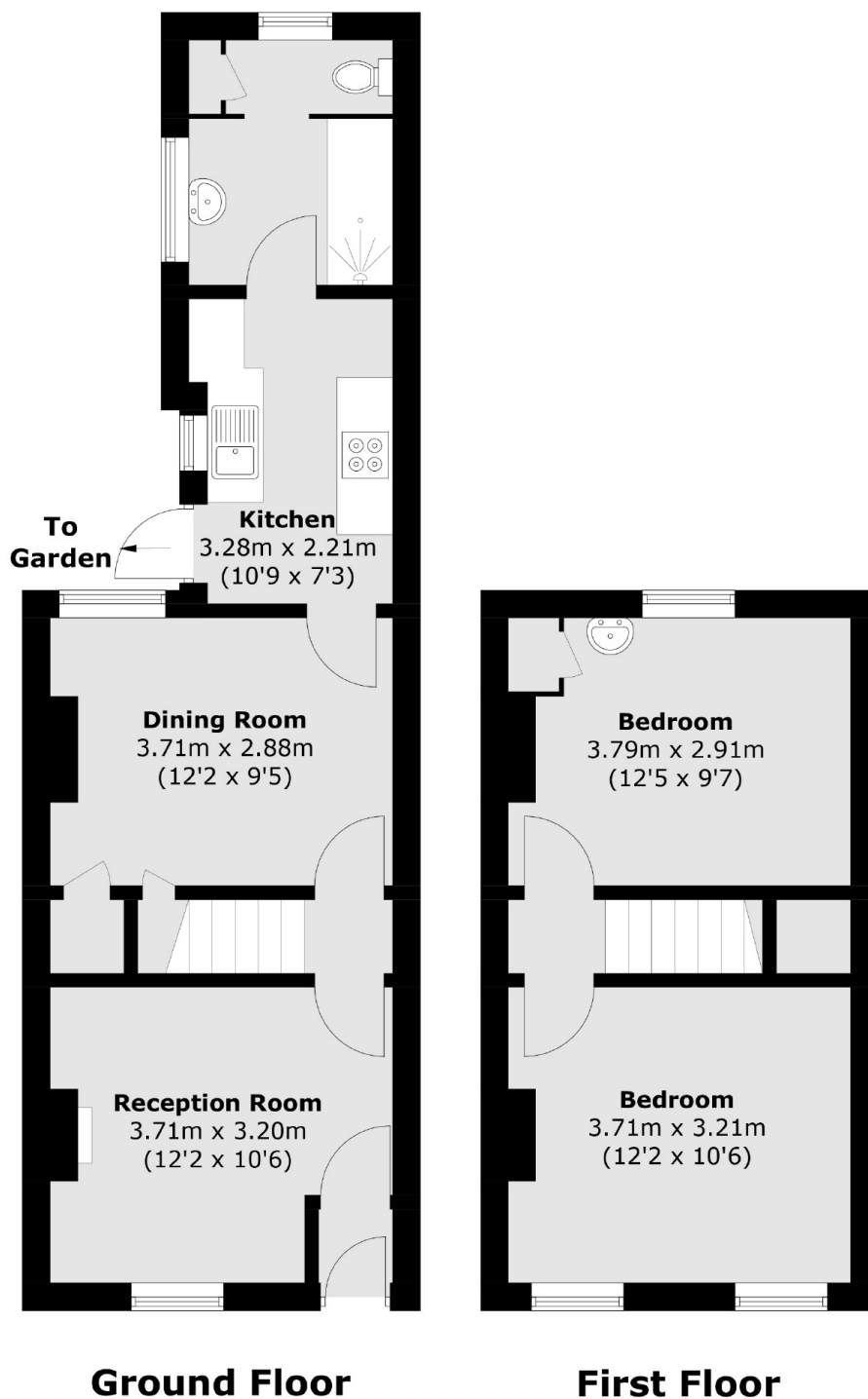
Located down one of Twickenham's most sought after roads is this charming two double bedroom Victorian house. The property benefits from having two reception rooms, a private rear garden and potential to extend the house if required.

Fifth Cross Road is in an ideal position for catchment into some of the area's best schools including Waldegrave Girls. There are excellent transport links nearby including Strawberry Hill and Fulwell stations, bus routes to Richmond and Kingston as well as easy access into Twickenham high street.

### Features

- Two Double Bedrooms
- Two Reception Rooms
- Private Rear Garden
- Potential To Extend
- Popular Location For Schools
- Victorian

# Fifth Cross Road, Twickenham, TW2



Total area (approx.): 66.7 sq. m (717.9 sq. ft)