



Twining Avenue, TW2

£625,000

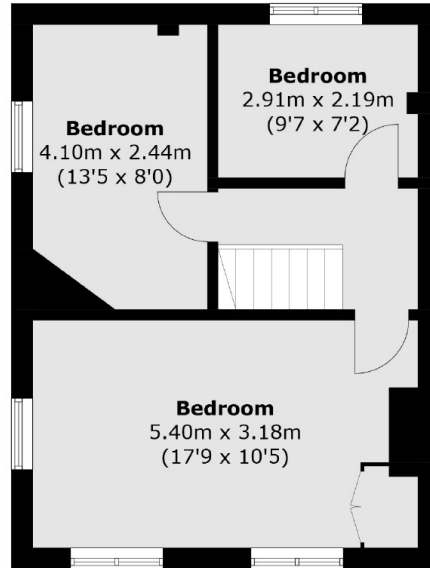
Situated on a large corner plot, this spacious family home includes a reception room, a large kitchen and three bedrooms. The property also has the benefit of a useful loft room and off street parking.

Twining Avenue is situated within easy reach of many bus routes which will take you into Twickenham, Richmond and Kingston town centres. Fulwell train station is just 0.4 Miles away and the area is renowned for its excellent state and private schools.

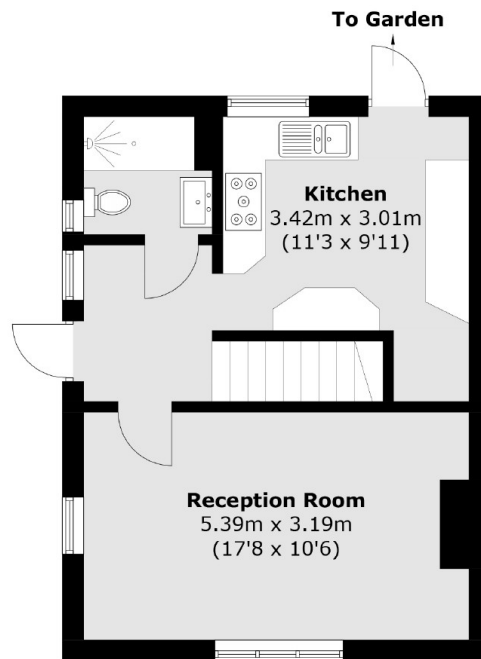
Features

- Popular Road
- Corner Plot
- Three Bedrooms
- Off Street Parking
- Scope To Extend
- Close to Waldegrave Girls School

Twining Avenue, Twickenham, TW2



First Floor



Ground Floor

Total area (approx.): 79.6 sq. m (856.7 sq. ft)