



Fulwell Park Avenue, TW2

£550,000

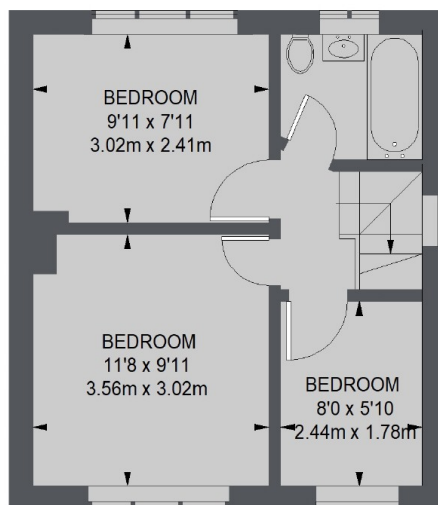
This unique three bedroom end-of-terrace house could be a wonderful family home for years to come. The property benefits from having a good size garden, rear access and scope to extend further.

Fulwell Park Avenue is a popular residential street within easy reach of both Fulwell and Strawberry Hill mainline stations. It is also popular for families looking to place their children in some of the finest schools around.

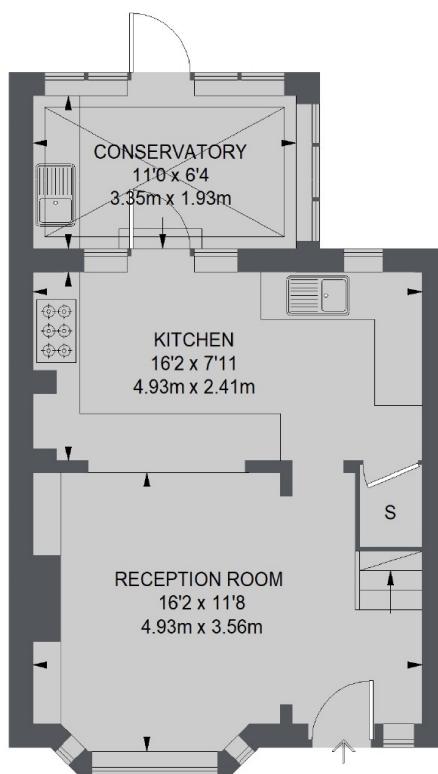
Features

- End Terrace
- Three Bedrooms
- Good Sized Garden
- Rear Access
- Scope To Extend
- Popular Road

Fulwell Park Avenue, Twickenham, TW2



FIRST FLOOR



GROUND FLOOR

TOTAL APPROX. FLOOR AREA
705 SQ. FT. (65.52 SQ. M.)