



## Lisbon Avenue, TW2

£550,000

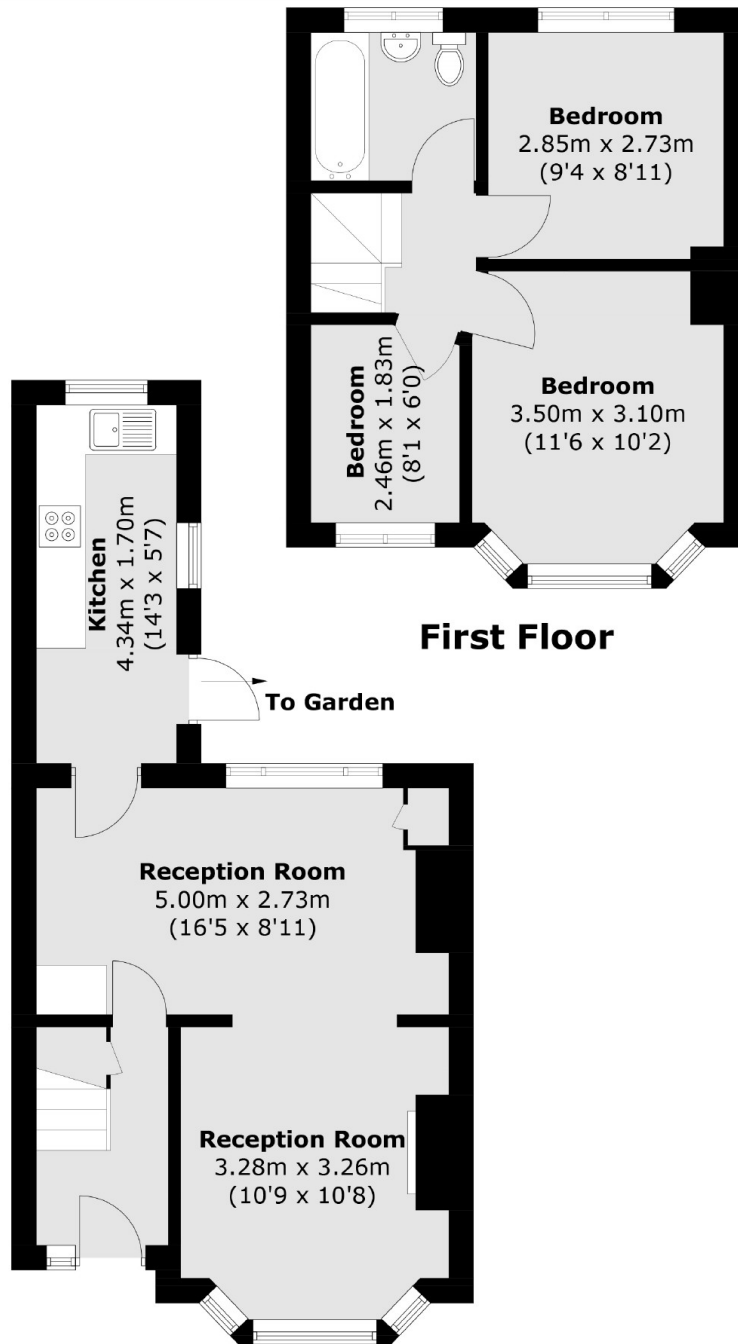
Located down a popular street is this beautiful three bedroom 1930's house that would be a wonderful family home for years to come as it benefits from a sunny private garden and potential to extend further if required.

Lisbon Avenue is a quiet residential road close to an array of transport links which will take you to Twickenham Richmond and Teddington high streets. Fulwell mainline station is just under a mile and the area is renowned for its excellent schools.

### Features

- Three Bedrooms
- Good Condition
- Potential To Extend If Required
- Private Rear Garden
- In Excellent School Catchments
- Popular Street

# Lisbon Avenue, Twickenham, TW2



## Ground Floor

Total area (approx.): 69.0 sq. m (742.7 sq. ft)