



London Road, TW1

£629,950

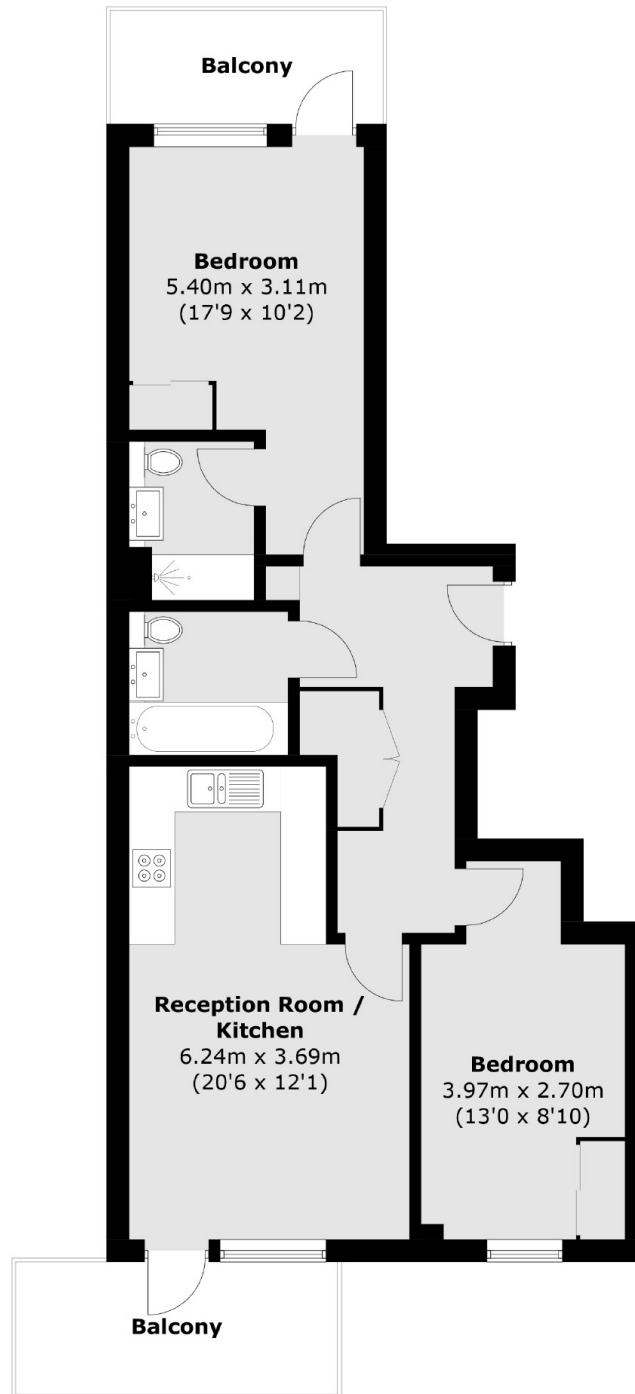
Located in central Twickenham is this impressive two double bedroom modern apartment. The property benefits from having two bath/shower rooms and two private balconies. The development has a security entry phone system and a lift.

Pullman Court is part of the much anticipated and highly sought after Twickenham Gateway development situated in the town centre where you will find a vast array of shops, bars and restaurants. Twickenham station has a fast link into London Waterloo.

Features

- Two Double Bedrooms
- Two Bath/Shower Rooms
- Two Private Balconies
- Excellent Condition
- Central Location
- Lift Accessed Development

London Road, Twickenham, TW1



Total area (approx.): 67 sq. m (721.2 sq. ft)
Balcony area (approx.): 12.8 sq. m (137.8 sq. ft)